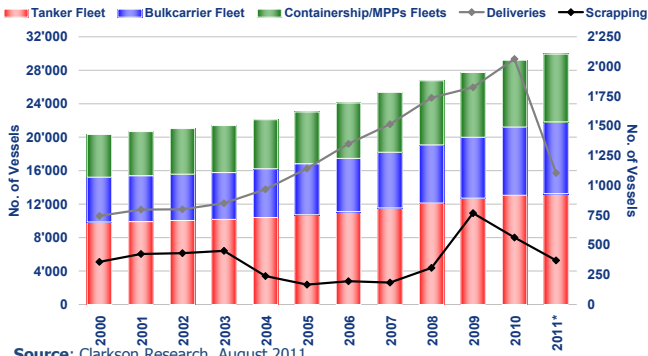


## Tanker, Bulkcarrier, Containership and Multipurpose Fleets



Source: Clarkson Research, August 2011.

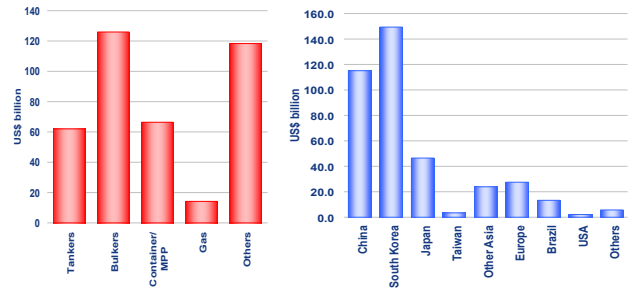
**Note (1):** Includes all vessels in these categories above 100 GT;

**Note (2):** \* 2011 data is year-to-date.

**Note (3):** All fleet totals are on the left-hand axis and deliveries and scrapping figures are on the right hand axis.

Fleet totals are as at end year; deliveries and scrapping figures are full year totals.

## Value of Orderbook



### Value of Newbuildings (by Vessel Type)

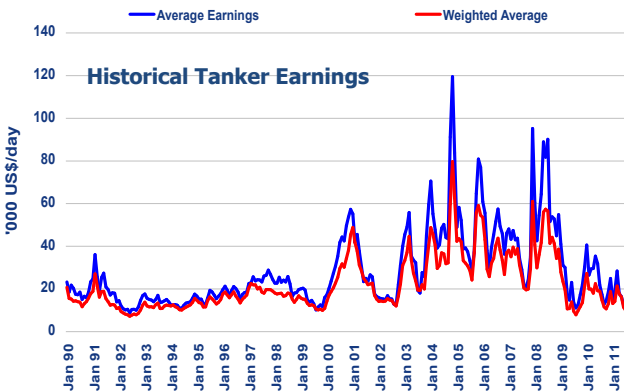
Total value of Newbuilding orderbook (1<sup>st</sup> August 2011):  
 US\$386.8 bn (at contracted values)

Source: Clarkson Research, August 2011.

### Value of Newbuildings (by Country/Region of Build)

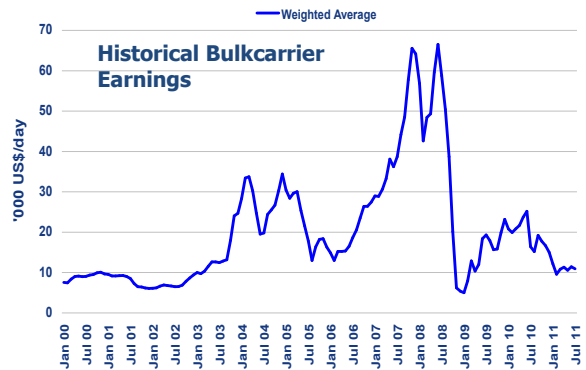
(by Country/Region of Build)

## Tanker Freight Rates



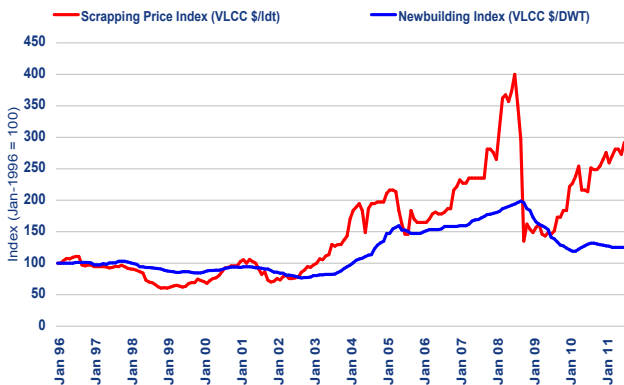
Source: Clarkson Research, August 2011.

## Bulkcarrier Freight Rates



Source: Clarkson Research, August 2011.

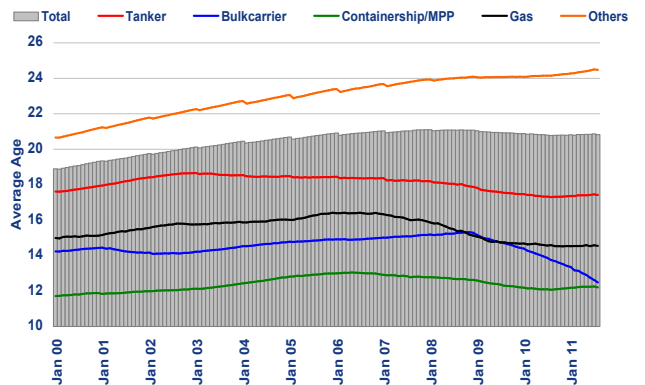
## Scrapping Prices



Source: Clarkson Research, August 2011.

Comparison between Average Newbuilding and Scrap Prices

## Average Age of the World Fleet 2000-2011



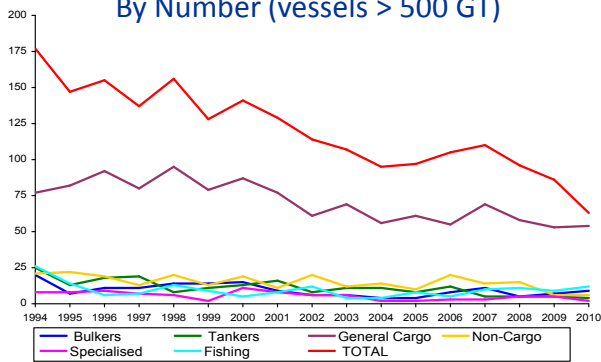
Source: Clarkson Research, August 2011.

**Note (1):** Includes all vessels in these categories above 100 GT

**Note (2):** Average age is calculated using number of vessels.

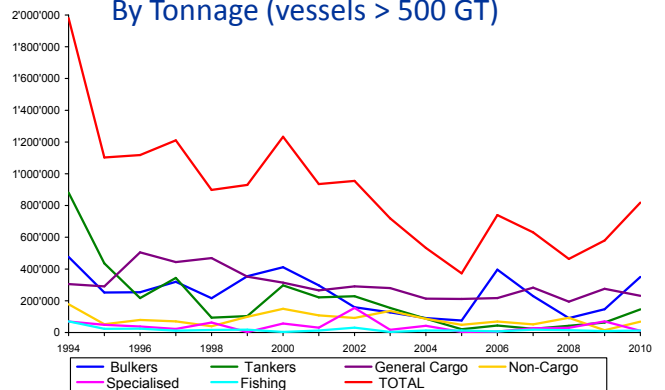
Calculations are based on year and month of build.

### Total Losses 1994 – 2010 By Number (vessels > 500 GT)



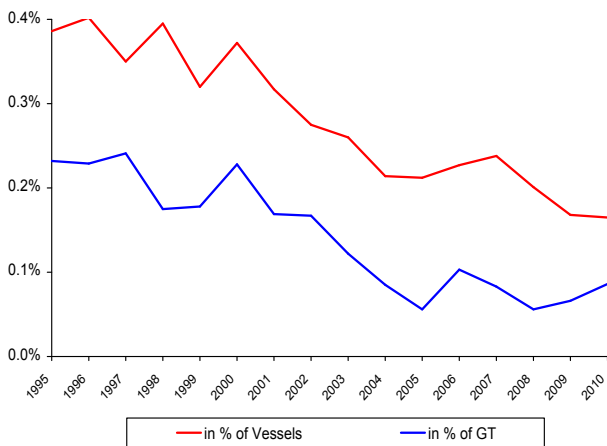
Source: LMIU, total losses as reported in Lloyds List

### Total Losses 1994 – 2010 By Tonnage (vessels > 500 GT)



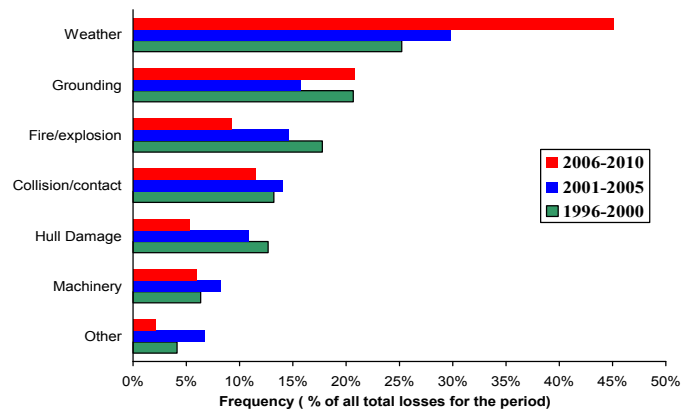
Source: LMIU, total losses as reported in Lloyds List

### Total Losses 1994 – 2010 As Percentage of World Fleet Vessels > 500GT



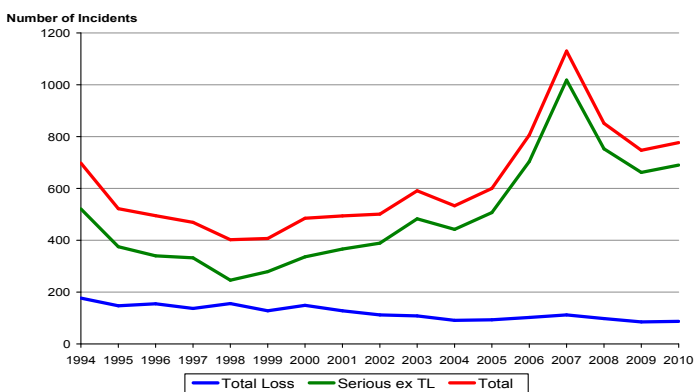
Source: Fleet numbers : Clarkson Research Services  
 Losses: LMIU, total losses as reported in Lloyds List

### Total Losses 1996 – 2010 By Cause, All Vessel Type (vessels > 500 GT)



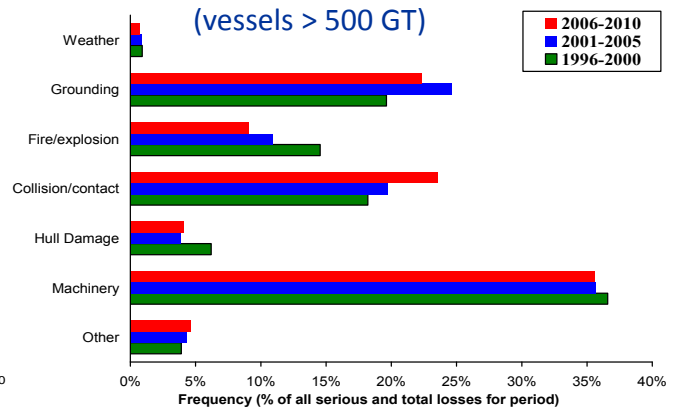
Source: LMIU, total losses as reported by Lloyds List

### Serious and Total Losses 1994 – 2010 By Number (vessels > 500 GT)



Source: LMIU, total losses as reported by Lloyds List

### Serious Losses 1996 - 2010 By Cause, All Vessel Type (vessels > 500 GT)



Source: LMIU, total losses as reported by Lloyds List