



IUMI International Union  
of Marine Insurance

# IUMI Organization and Facts and Figures Committee

## Presentation at the Marine Safety Committee 11<sup>th</sup> May 2016

Patrizia Kern – Facts and Figures, Committee Chairman  
Marine Head, Swiss Re Corporate Solutions



IUMI International Union  
of Marine Insurance

# Agenda

- 1. How IUMI works**
2. What is Facts and Figures
3. What do we do

Patrizia Kem  
Facts and Figures  
11th May 2016



# 1. How IUMI works

- Lobbying
  - IMO
  - Local Authorities
  - Stakeholders Maritime Business
- Services
  - Statistics
  - Education
  - Information (Press Work, IUMI Newsletter)
  - Conferences, Meetings



# 1. How IUMI works

## Who are IUMI's members?

- 46 national insurance and marine insurance associations and
- 21 IUMI Professional Partners (IPPs), all related to the marine insurance business
- IUMI is representing Marine Insurers and Re-Insurers

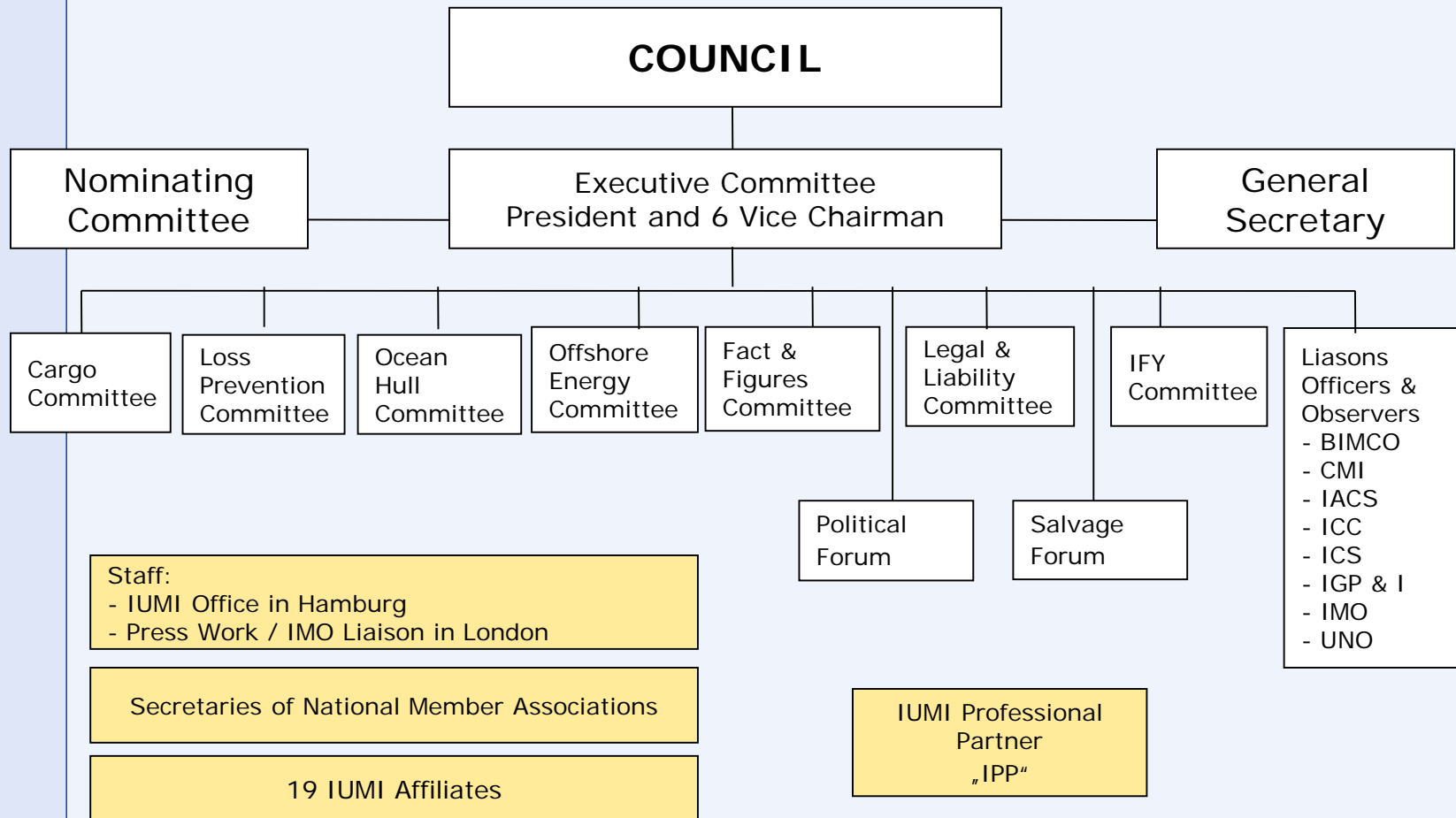




# 1. How IUMI works

IUMI International Union  
of Marine Insurance

*“a professional body which is run by and for its members”*





## Report of the f&F committee members

IUMI International Union  
of Marine Insurance

▪ Astrid Seltmann	- Nordic, <i>Secr. and Vice Chairman</i>
▪ David Matcham	- U.K.
▪ Erika Schoch	- Alsum
▪ Henry Newman	- U.S.A.
▪ Javier Alonso	- Spain
▪ Jesse DeCouto	- Bermudas
▪ Joachim ten Eicken	- Germany
▪ Laura Uliana	- Italy
▪ Lisa Yu	- UK
▪ Li Zhang	- China
▪ Mathieu Daubin	- France
▪ Patrizia Kern	- Switzerland, <i>Chairman</i>
▪ Philip Graham	- U.K.
▪ Tetsuya Watanabe	- Japan

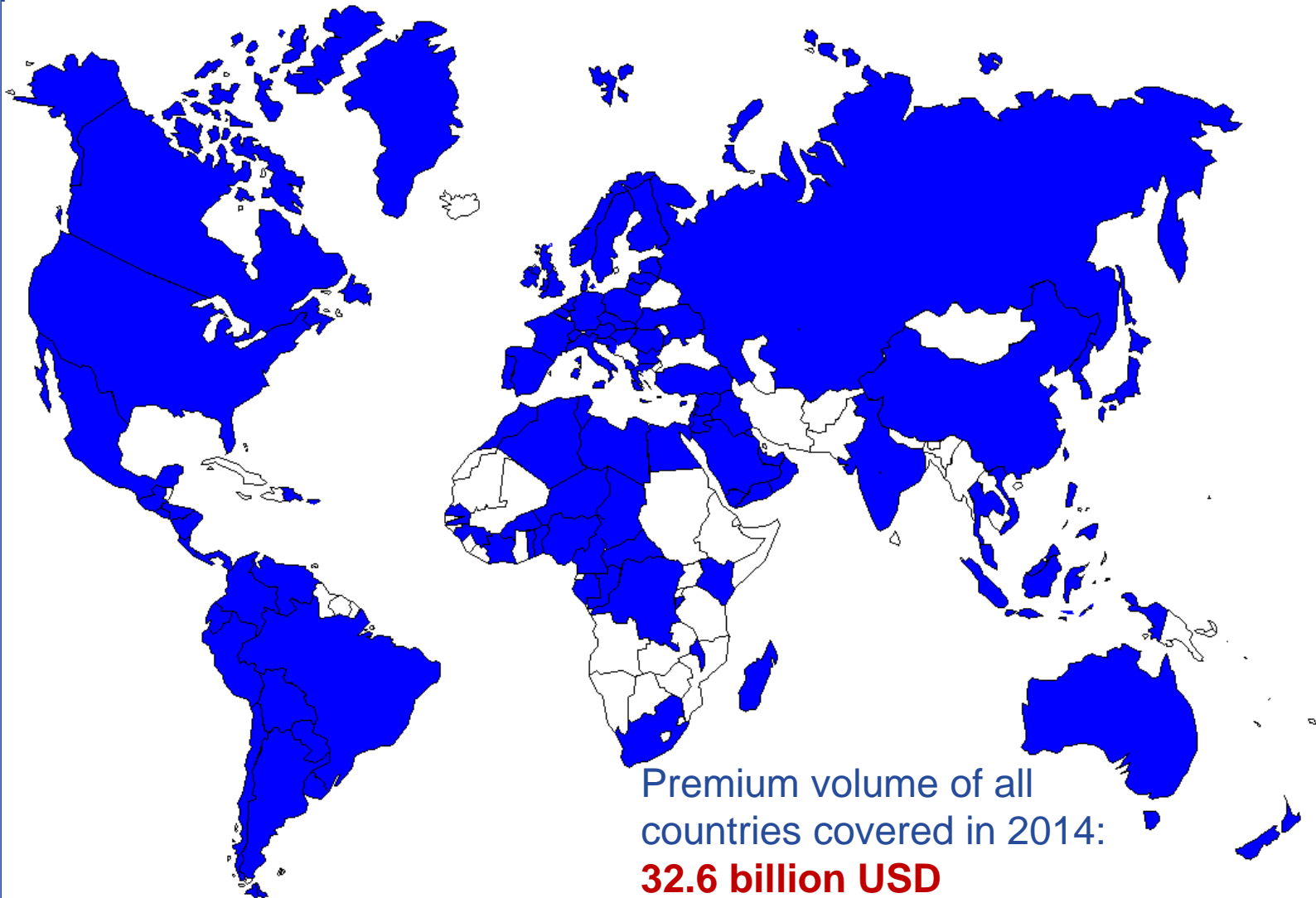
Patrizia Kern  
Facts and Figures  
11th May 2016



IUMI International Union  
of Marine Insurance

# Facts & Figures

## Country data collection 2014 Premium



Patrizia Kem  
Facts and Figures  
11th May 2016



# Report of the facts & Figures committee update on committee work

IUMI International Union  
of Marine Insurance

▪Update World Fleet & Trade	Sep 2016
▪Update Global Marine Insurance	Sep 2016
▪Fact Sheets	Sep 2015
▪Hull Repair Cost Index Follow up	IUMI Website September 2016
▪Cargo Index Follow up	IUMI Website September 2016
▪Cargo, Hull & Offshore Statistics	Mrz 2016

Patrizia Kem  
Facts and Figures  
11th May 2016

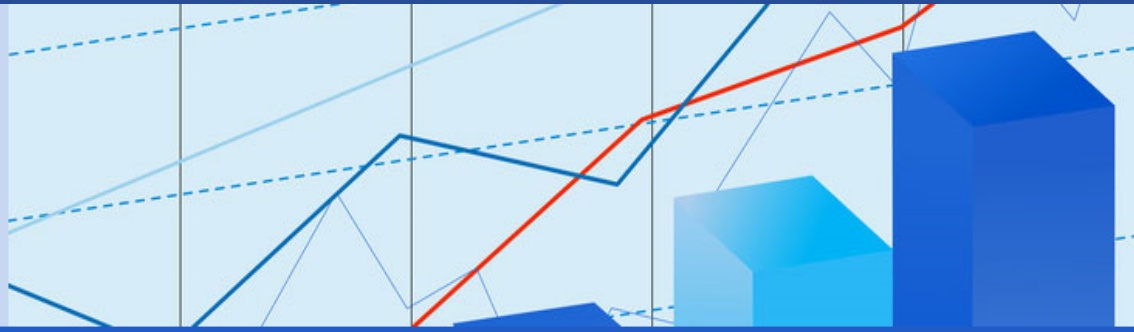




# Connecting to IUMI: Homepage



IUMI  
International Union of  
Marine Insurance



### Main Menu

- ▣ Home
- ▣ President's Page ▶
- ▣ Secretary General's Page ▶
- ▣ **Committees** ▶
- ▣ Conferences ▶
- ▣ Marine Reinsurance
- ▣ IMO ▶
- ▣ Affiliates & Reports ▶
- ▣ Education ▶
- ▣ Press ▶
- ▣ About IUMI ▶

Home ▶ Committees ▶ Facts & Figures Committee ▶ Statistics

### Statistics

The underlying data are available upon contacting the secretary general of IUMI. When using these statistics, please indicate 'IUMI - International Union of Marine Insurance' as source.

### 2016

#### Spring Edition

- IUMI 2016. [Cargo Statistics](#) (by Donald Harrell)
- IUMI 2016. [Cargo Statistics Analysis](#) (by Nick Derrick)
- IUMI 2016. [Casualty and World Fleet Statistics](#) (by Philip Graham)
- IUMI 2016. [Casualty and World Fleet Statistics Analysis](#) (by Mark Edmondson)

### Annual Conferences



### IUMI Statistics

[Global Premium, Loss and Fleet Statistics](#)



IUMI International Union  
of Marine Insurance

Thank you very much for your attention

Patrizia Kem  
Facts and Figures  
11th May 2016