

# The 2010 Cefor NoMIS **COASTAL** Report

## Nordic Marine Insurance Statistics as of 31 December 2010

If not indicated otherwise, data in this report is on **accident year basis**  
(i.e. claims allocated to the calendar year in which the accident occurred)

All **figures as reported by 31 December 2010**  
(i.e. without "IBNR" loading for claims not yet registered or incurred by this date)

Included in this report are vessels with:  
Gross ton  $\leq$  5000  
Length  $\leq$  15m  
Vessel types "Fishing", "Supply/Offshore"



# 2010 Nordic Marine Insurance Statistics – Part 1

## Part 1 – Introduction

- Contents
- NoMIS
- Explanations

## Part 3 – NoMIS portfolio Key figures

- Development of average insured values and gross ton
- Change in average insured renewed values, by month of renewal
- Average age
- Average standard deductible
- Claims in claim bands – claim per vessel
- Number and cost of claims by type
- Claim frequency
- Claim per vessel
- Claim per Sum Insured
- Claim per Vessel – accumulated quarterly development
- Claim frequency – accumulated quarterly development
- Claim per vessel as reported per 4<sup>th</sup> quarter of each year

## Part 4 – Key figures by age group

- Distribution of number of vessels
- Claim frequency
- Claim per vessel
- Claim per Sum Insured
- Average claim amount



# 2010 Nordic Marine Insurance Statistics – Part 1

## Part 5 – Key figures by vessel type group

- Distribution of number of vessels
- Claims frequency
- Claim per vessel
- Claim per Sum Insured
- Average claim amount

## Part 6 – Key figures by gross ton size group

- Distribution of number of vessels
- Claims frequency
- Claim per vessel
- Claim per Sum Insured
- Average claim amount

## Part 7 – Key figures by selected coastal vessel type size groups

- Distribution of number of vessels
- Claims frequency
- Claim per vessel
- Claim per Sum Insured
- Average claim amount

**Legal disclaimer** Cefor provides the statistics material in this presentation for general information purposes only. All key figures are derived from the Cefor portfolio, which reflects a minor part of the world fleet, the selection of ships being biased by Norwegian underwriting preferences. Therefore Cefor can accept no responsibility and shall not be liable for any loss which may arise from reliance upon the information provided.

With reference to [Commission Regulation \(EU\) No 267/2010 of 24 March 2010](#) (EU Block Exemption), it is further stressed that the statistical data presented in this publication is non-binding in its character.



## 2010 Nordic Marine Insurance Statistics – Part 1

The **Nordic Marine Insurance Statistics (NoMIS)** is a joint database project of Cefor members active on the Hull & Machinery market to compile insurance data and vessel characteristics for statistical purposes. The database is administered by Cefor.

Since its foundation in 1985 until 1997, the data was compiled by appointing Cefor a facultative reinsurer to which members of the Norwegian Hull Agreement ceded 0.1% of their H&M insurance. Premium and claims information was exchanged via Borderaux, the lead insurer providing details of each claim. While the Hull Agreement was discontinued in 1996, the statistics cooperation continued.

In 1998 steps were taken to update the NoMIS' database electronically. This was in place December 1999, enabling Cefor to produce up-to-date hull figures on a monthly basis, and extending the database substantially by including non-lead business.

In 2000, the database was extended to update business back to underwriting year 1995 electronically. In the following years, data from several new major CEFOR members was integrated, incl. retrospective data from 1995 uw year.

In 2009, in addition to the traditional ocean hull portfolio, the complete coastal hull portfolio of the participating NoMIS members was integrated into the NoMIS database, which this report is based upon.

By 31st December 2010, in all 105,962 vessel years and 23,691 claims were registered on underwriting years 1985 through 2010 **for the coastal portfolio** as defined on the front page.

The NoMIS statistics in this report comprise mainly data from the following marine insurers: Codan Group, Gjensidige If, Gard, NEMI (until 2009) Norwegian Hull Club, Tryg (until 2008).



## 2010 Nordic Marine Insurance Statistics – Part 1

All amounts are presented in USD.

Rate of exchange applicable to convert the figures from the original currencies into USD:

Premiums: average monthly rate of exchange of the month of transaction

Paid claims: average monthly rate of exchange of the month of transaction

Outstanding claims: average monthly rate of exchange of December 2009

Underwriting year = year in which the insurance policy attaches

All claims are net of any deductibles applicable.

Total Claims = Paid claims + Outstanding claims

TLO (or Total Losses) = claims in excess of 75% of the Sum Insured

Partial Losses = all losses  $\leq$  75% of the Sum Insured

IBNR ("Incurred but not reported") = reserve for claims adjustments and registration backlog



# 2010 Nordic Marine Insurance Statistics – Part 1

## Types of vessels specified

<u>Vessel Type group</u>	<u>Vessels Types included</u>	<u>Lloyds Conf. Index Code</u>
BULK*	Bulk, Ore, Cement	BBU, BCB, BCE, BOR, BWC
CAR/RORO***	Car Carrier, RoRo	MVE, URC, URR
CARGO*	Dry Cargo, General Cargo, Reefers, Pallett Vessels, Animal Transport Vessels	GCT, GGC, GPC, GRF, MLV
CHEM./PRODUCT**	Chemical Carriers, Product / Acid / Edible Oil / Fish Oil / Fruit Juice / Wine / Molasses / Waste/ Water Tankers	TAC, TCH, TCO, TEO, TFJ, TFO TMO, TPD, TWA, TWN, TWT
CONTAINER *	Container	UCC, UCR
FISHING	Fishing vessels	FFC, FFF, FFP, FFS, FTR,FWF,FWH
LNG/LPG**	Gas Carriers LNG, LPG, LNG/LPG	LNG, LPG, LNP
OBO**	Combined Vessels Bulk, Ore, Oil	COO, CBO
OTHER***	any other ships and floating units, any codes not specifically defined otherwise, like Barges, Cranes, Floating Storage, Floating Production, Pollution Control Vessels, Mud boat, Research vessels, Cable, Seismic Search vessel, Flo/Flo, etc.	



## 2010 Nordic Marine Insurance Statistics – Part 1

### Types of vessels specified contd.

<u>Vessel Type group</u>	<u>Vessels included</u>	<u>Lloyds Conf. Index Code</u>
PASSENGER	All types of passenger vessels and ferries, Passenger/Roro, Highspeed Craft	LOF, LOP, MPR, OFY, OHF, OHS, PRR
SUPPL/OFF	Supply, Anchorhandling, Standby, Drilling Vessel, General Service Vessel, Supply (Tug, Anchor), Tug/Icebreaker	OBS, OBT, ODS, OIB, OIF, OIS, OIT, OLT, OMN, OMT, OOS, OPP, ORP, OSU, OSY, OSZ, OWO, XAA, XAF, XAG, XAH, XAT, XCT, XFF, XFS, XPT, XTG, XTI, XTP, XTR, XTS, XTT, XTX
TANK**	Tanker, Sludge Vessel, Crude Oil Tanker, Asphalt Carriers, Bunkering Tanker, Naval Auxiliary	OSC, OTC, TAS, TBK, TCR, TNA, TTA

To serve the needs of the coastal portfolio, above vessel types are grouped at a higher level as follows:

\* defined as "CARGO"

\*\* defined as "TANK"

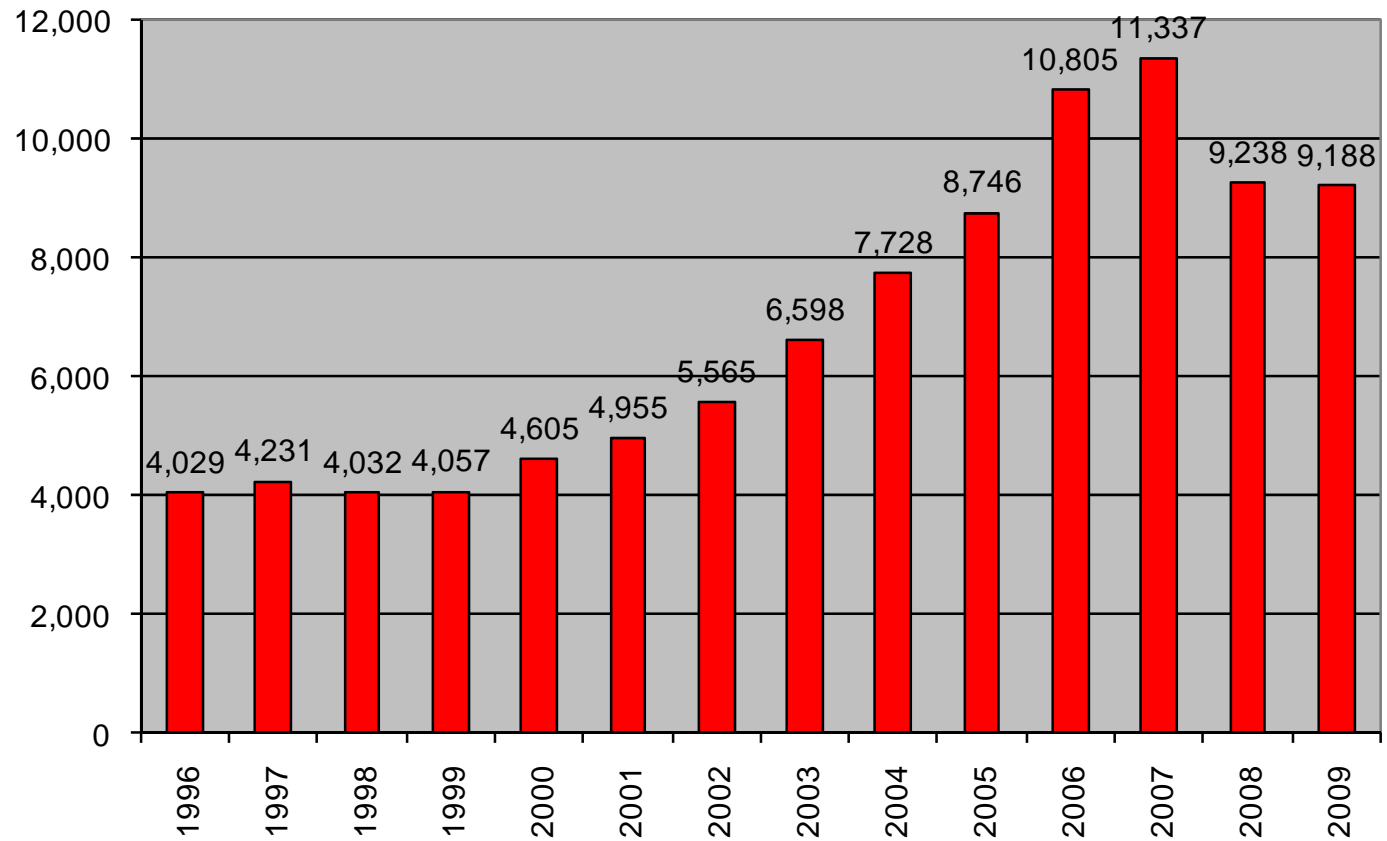
\*\*\* defined as "OTHER"



# 2010 Nordic Marine Insurance Statistics – Part 3

As of 31 December 2010

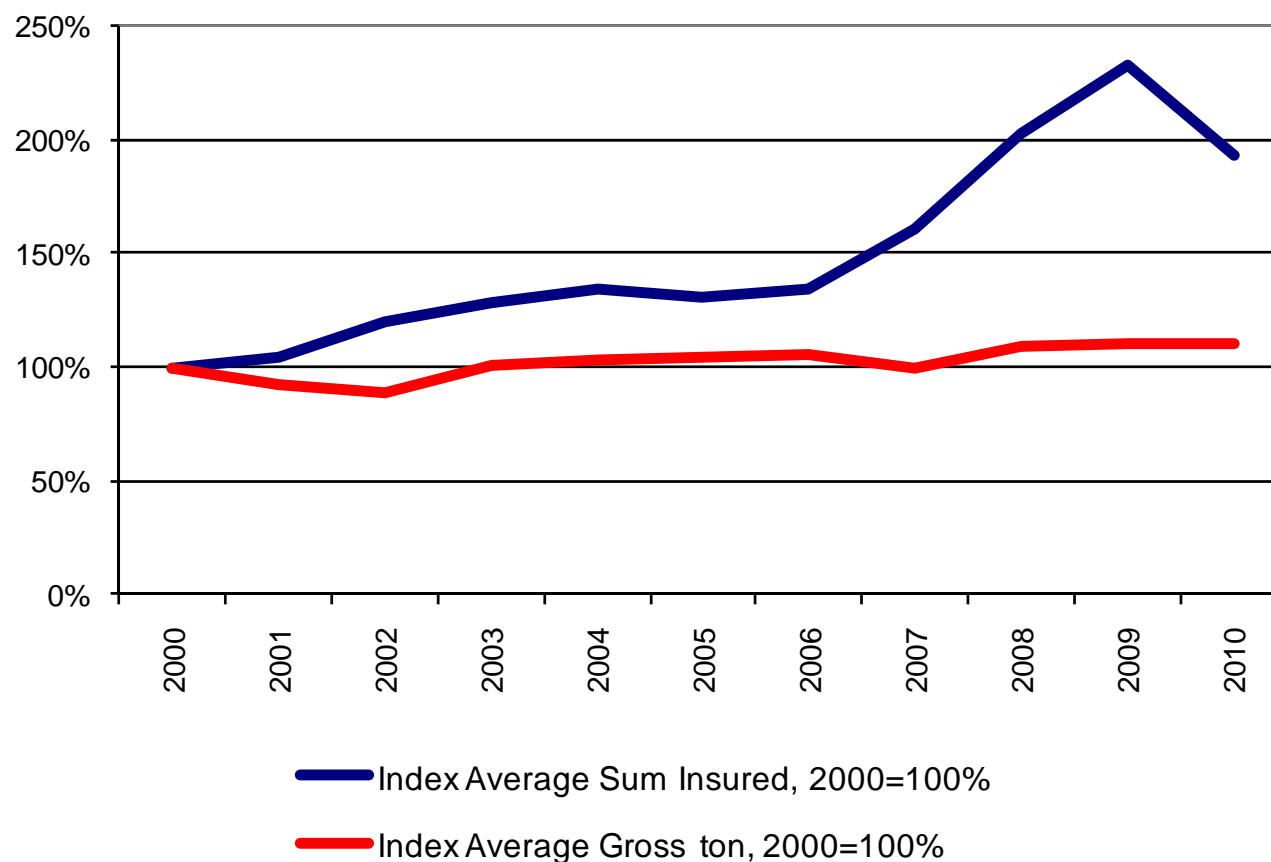
### Number of vessels by year of exposure



# 2010 Nordic Marine Insurance Statistics – Part 3

As of 31 December 2010

## Evolution of average Sum insured and Gross ton 2000=100%



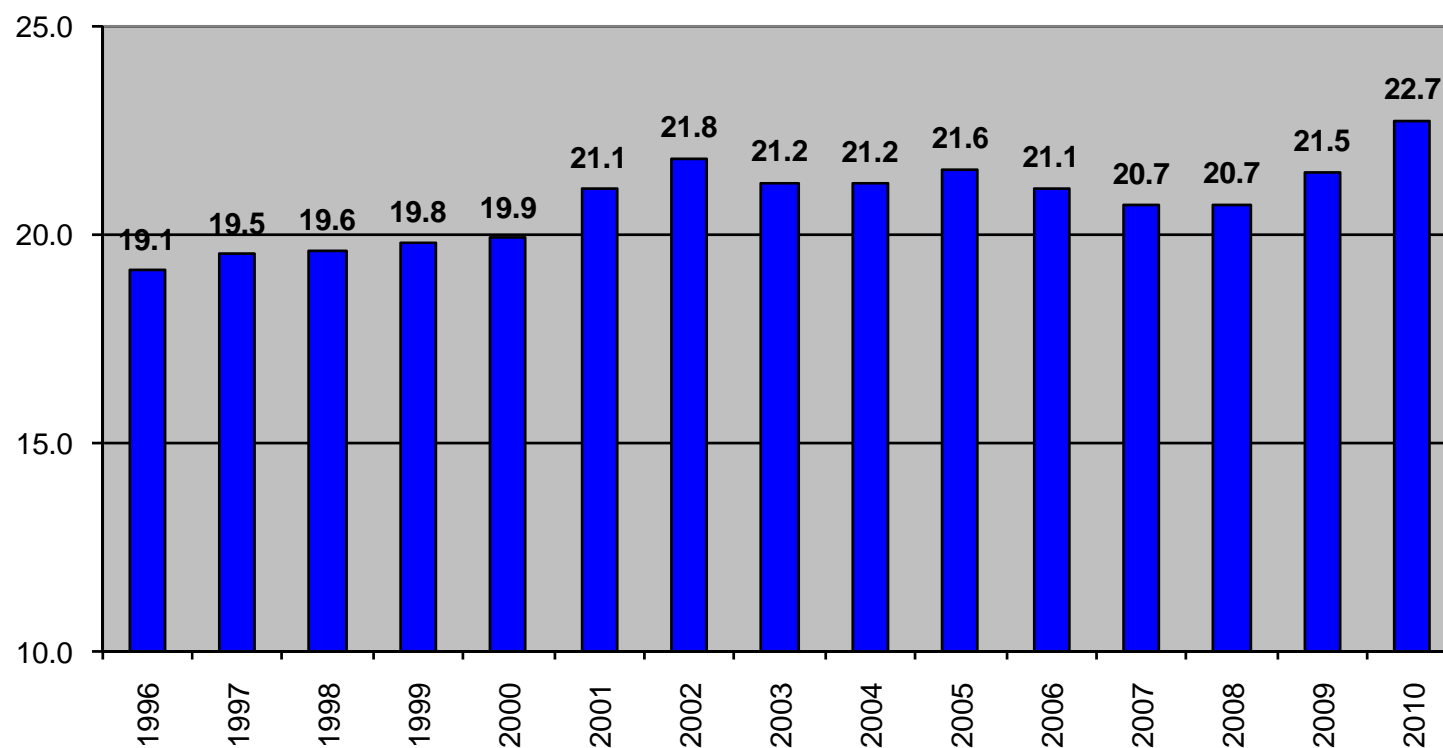
Includes all insured vessels per underwriting year (renewed and new business).



## 2010 Nordic Marine Insurance Statistics – Part 3

As of 31 December 2010

Average Age



The age increase in 2010 is due to improved reporting of small coastal fishing vessels.

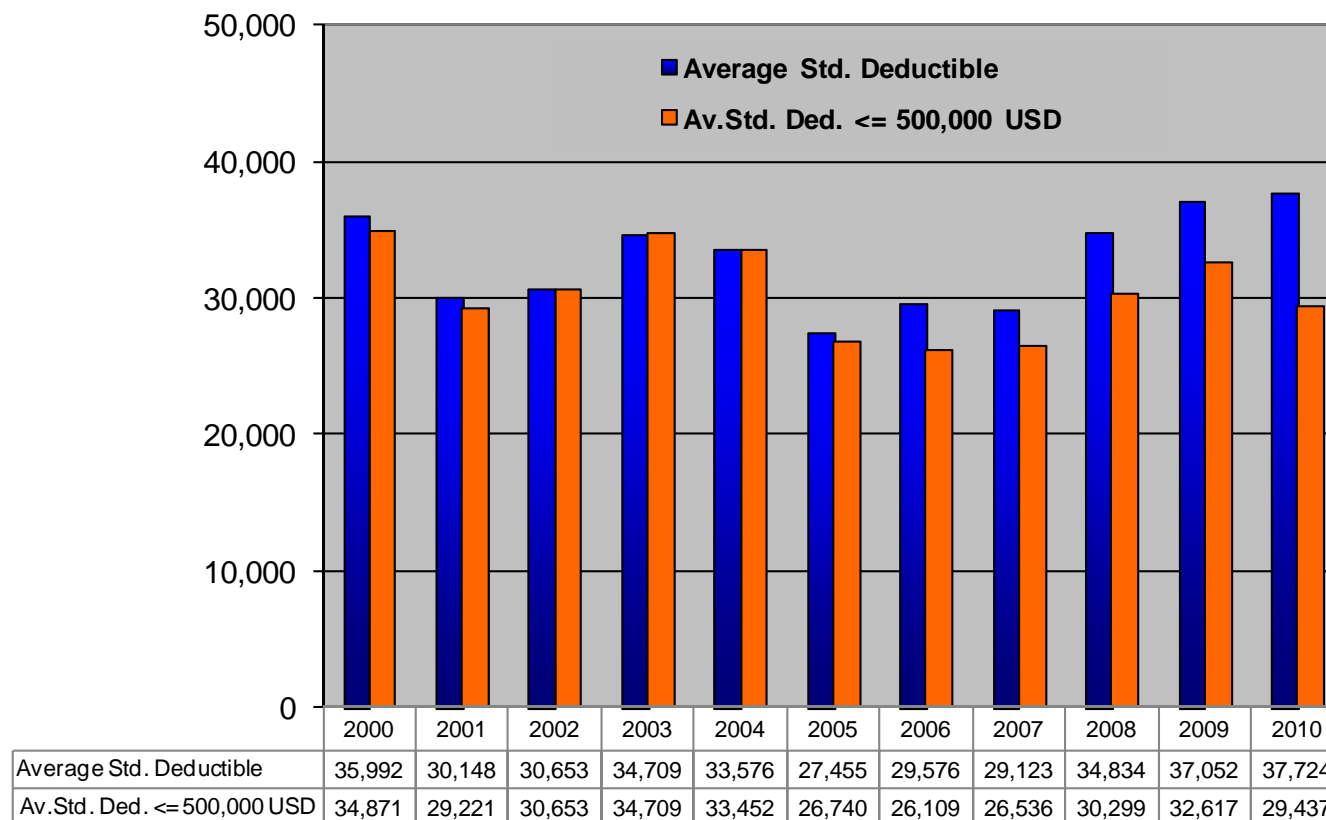


# 2010 Nordic Marine Insurance Statistics – Part 3

As of 31 December 2010

## Average Standard Deductible Development

All business, 100%, in USD



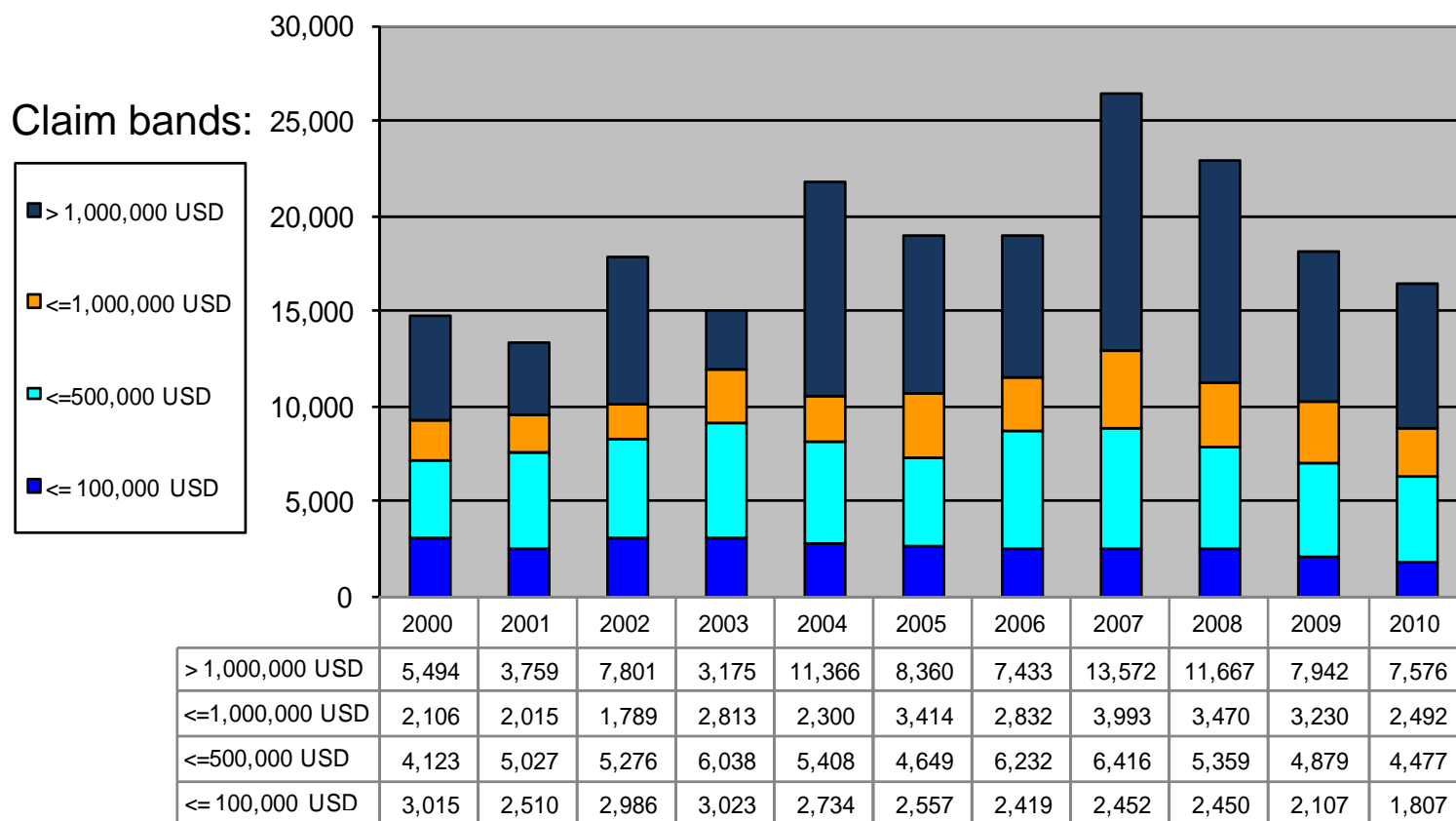
Includes all insured vessels per underwriting year (renewed and new business).



# 2010 Nordic Marine Insurance Statistics – Part 3

As of 31 December 2010 – paid & outstanding as reported, no IBNR reserve added

### USD Claim per vessel, by date of loss



# 2010 Nordic Marine Insurance Statistics – Part 3

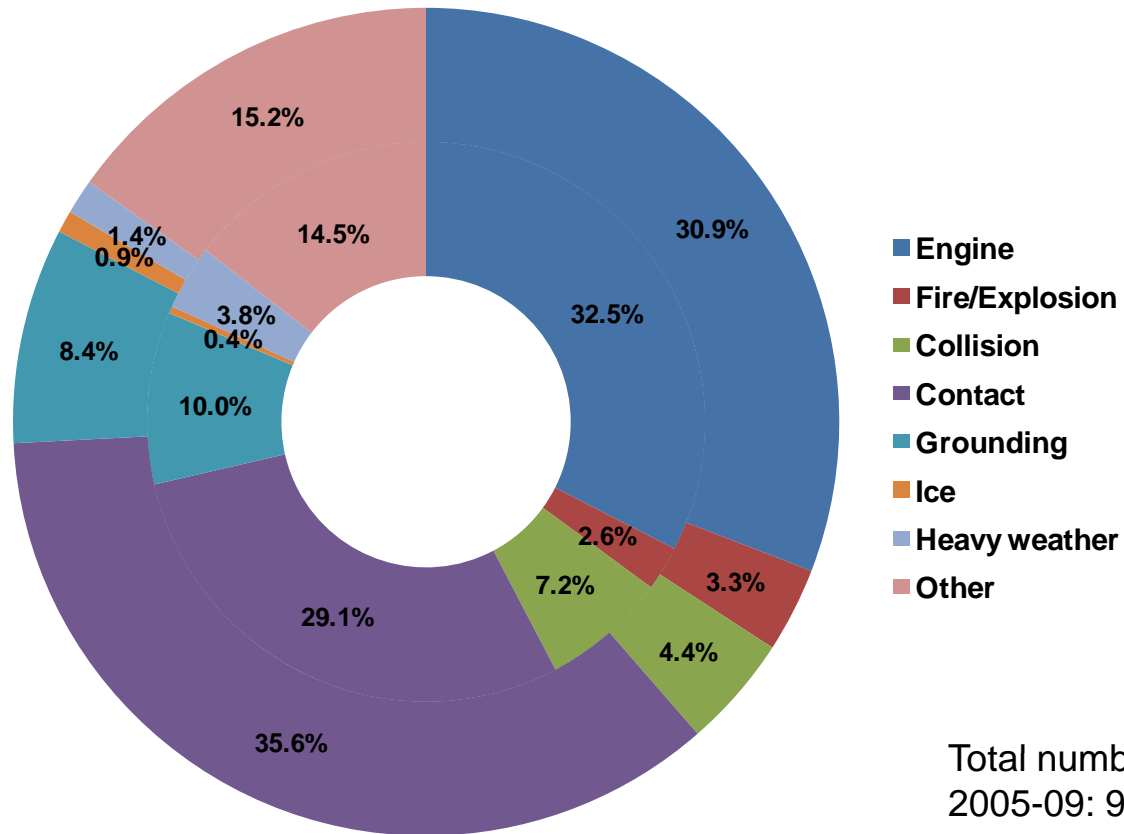
As of 31 December 2010 – paid & outstanding as reported, no IBNR reserve added

## Claims by Claims type

### Number of claims

Inner ring: 2005-2009

Outer ring: 2010



Total numbers  
 2005-09: 9,386  
 2010: 1,386

# 2010 Nordic Marine Insurance Statistics – Part 3

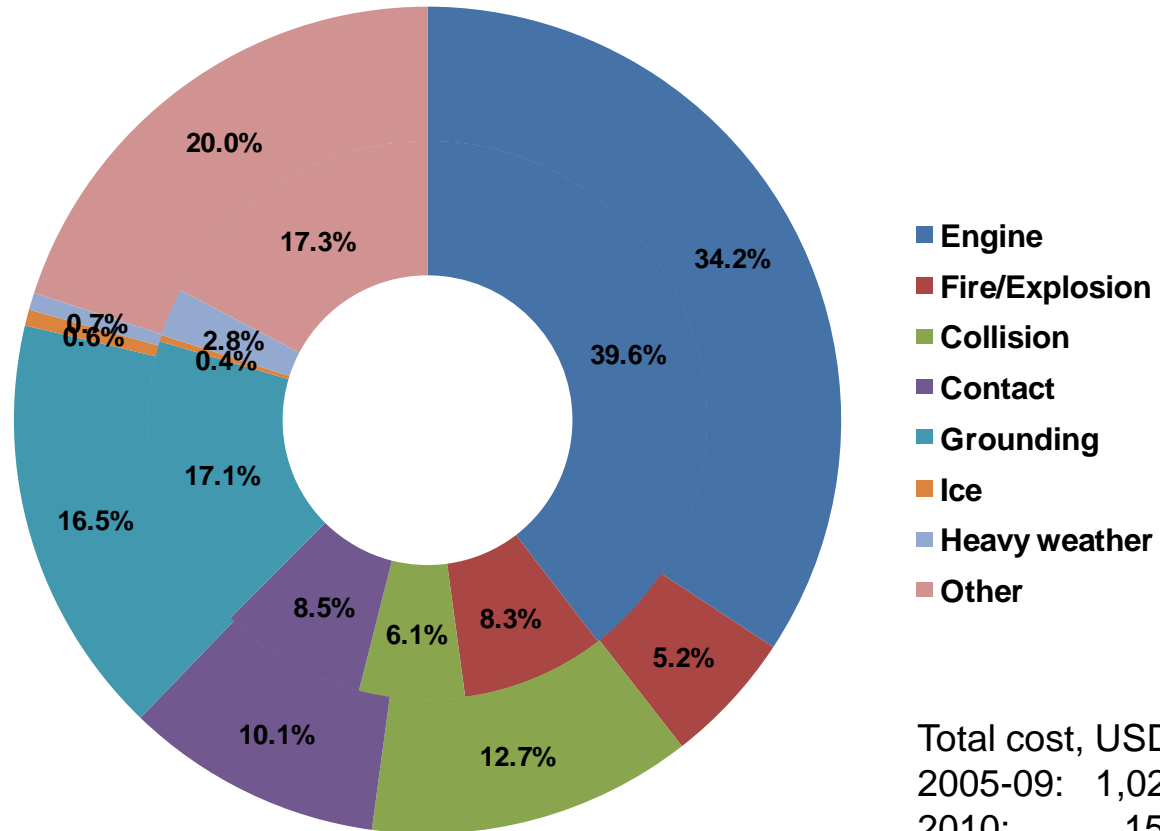
As of 31 December 2010 – paid+outstanding as reported, no IBNR reserve added

## Claims by Claims type

### Cost of claims

Inner ring: 2005-2009

Outer ring: 2010

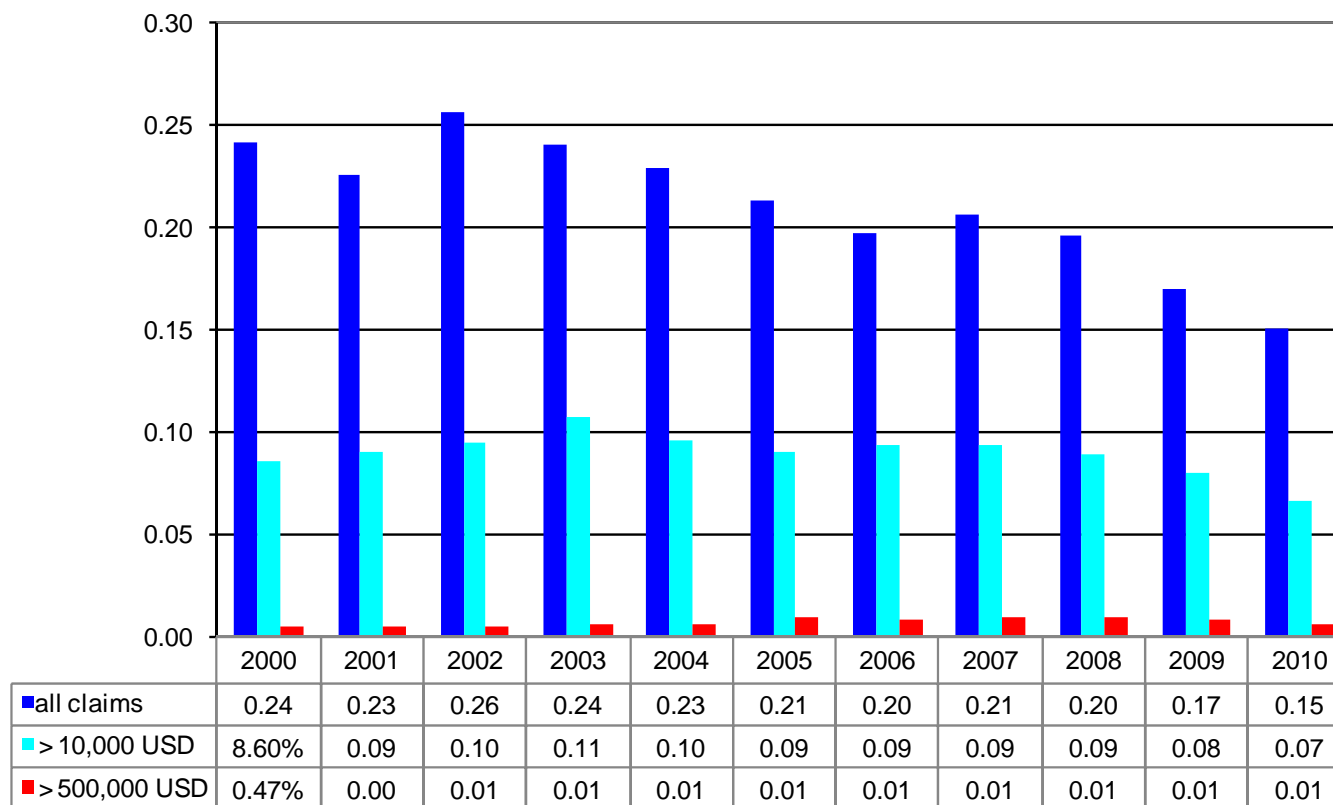


Total cost, USDm:  
 2005-09: 1,025.6  
 2010: 150.2

## 2010 Nordic Marine Insurance Statistics – Part 3

As of 31 December 2010 – paid+outstanding as reported, no IBNR reserve added

### Claim frequency



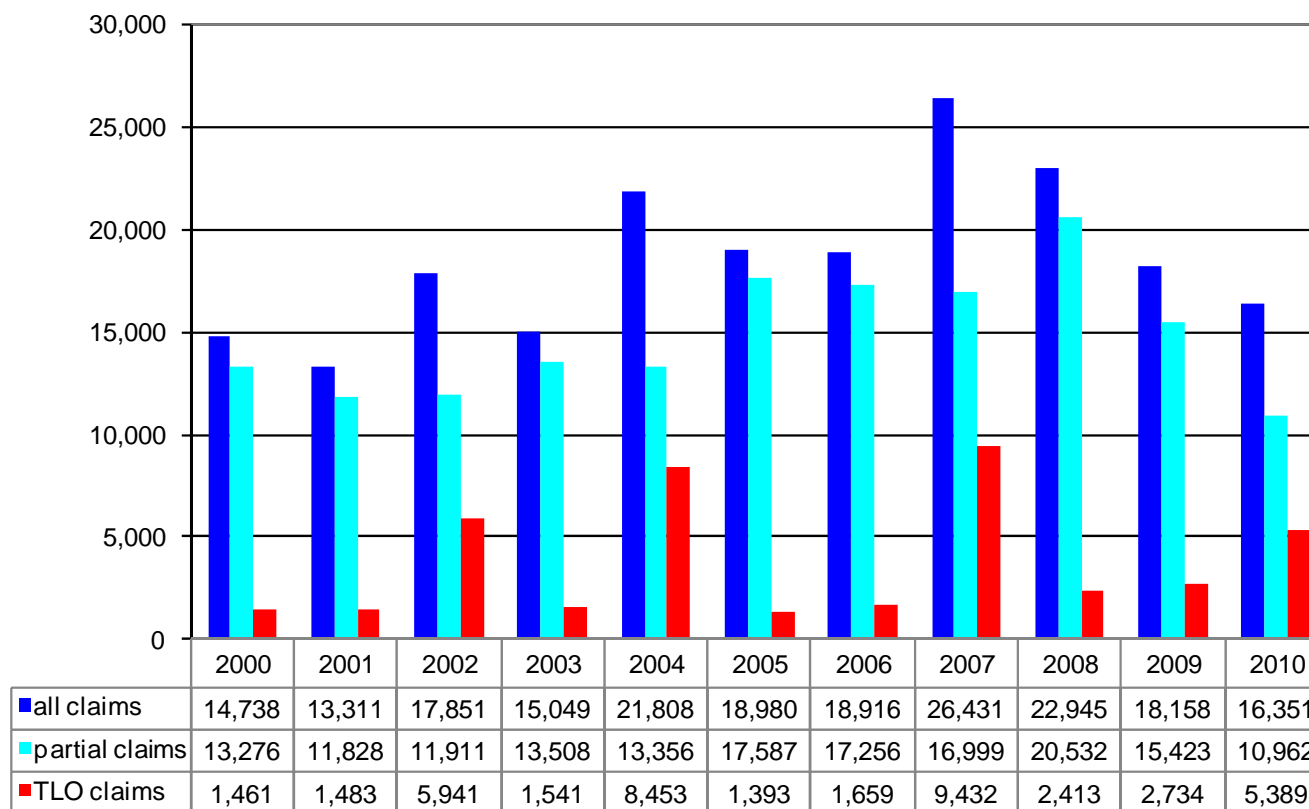
Comment: Claims < 10.000 USD account for more than half of all claims. Registration of these may vary over time and in each company and will thus influence the registered frequency. In addition any increase/decrease of insurance deductibles will have impact on the registered frequency



## 2010 Nordic Marine Insurance Statistics – Part 3

As of 31 December 2010 – paid+outstanding as reported, no IBNR reserve added

### USD Claim per Vessel

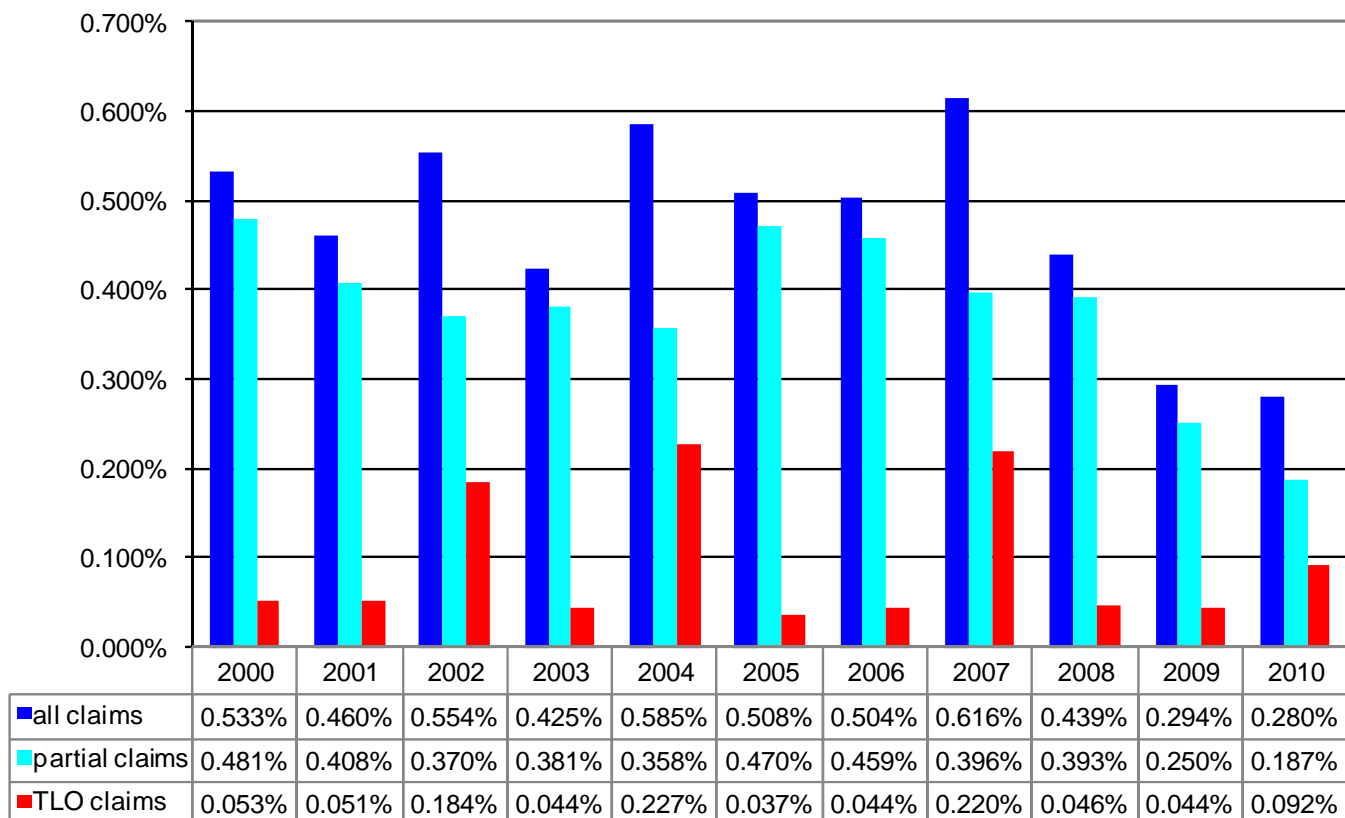




## 2010 Nordic Marine Insurance Statistics – Part 3

As of 31 December 2010 – paid+outstanding as reported, no IBNR reserve added

### USD Claim per Sum Insured



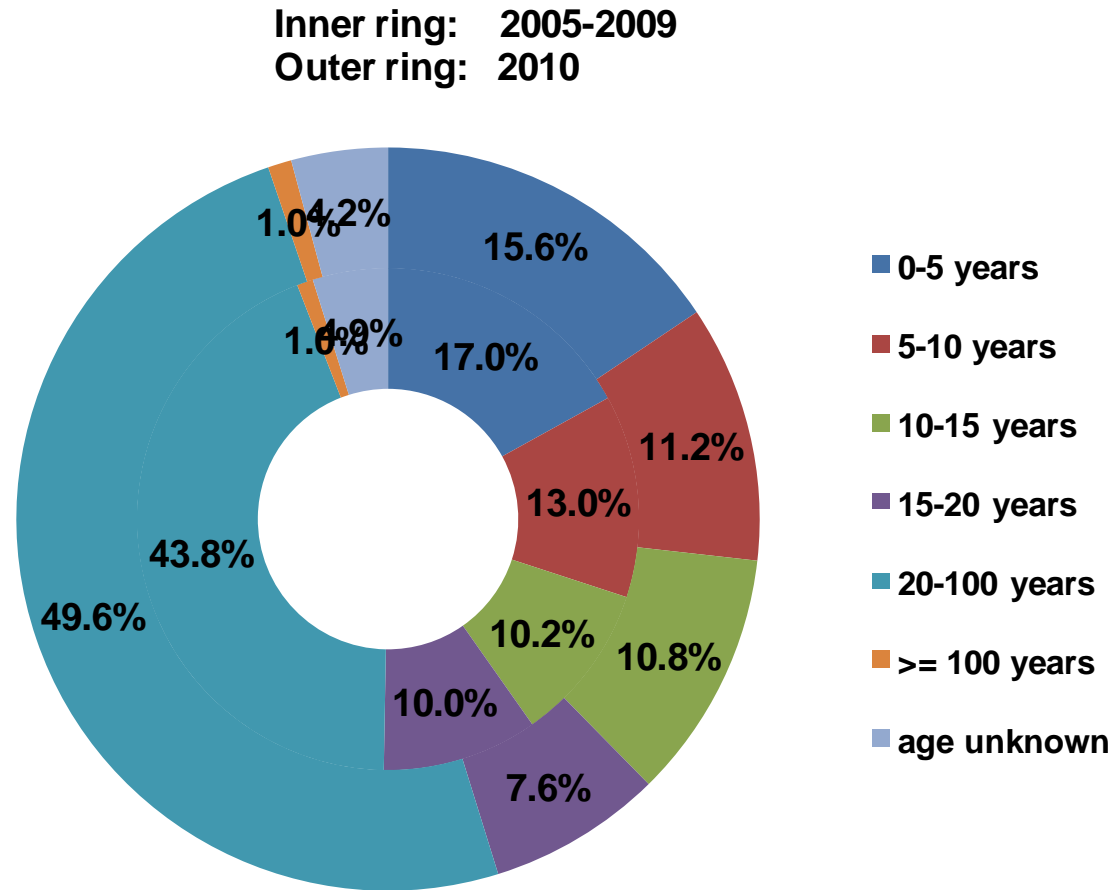


Cefor

# 2010 Nordic Marine Insurance Statistics – Part 4

As of 31 December 2010

Number of vessels per age group, by year of exposure

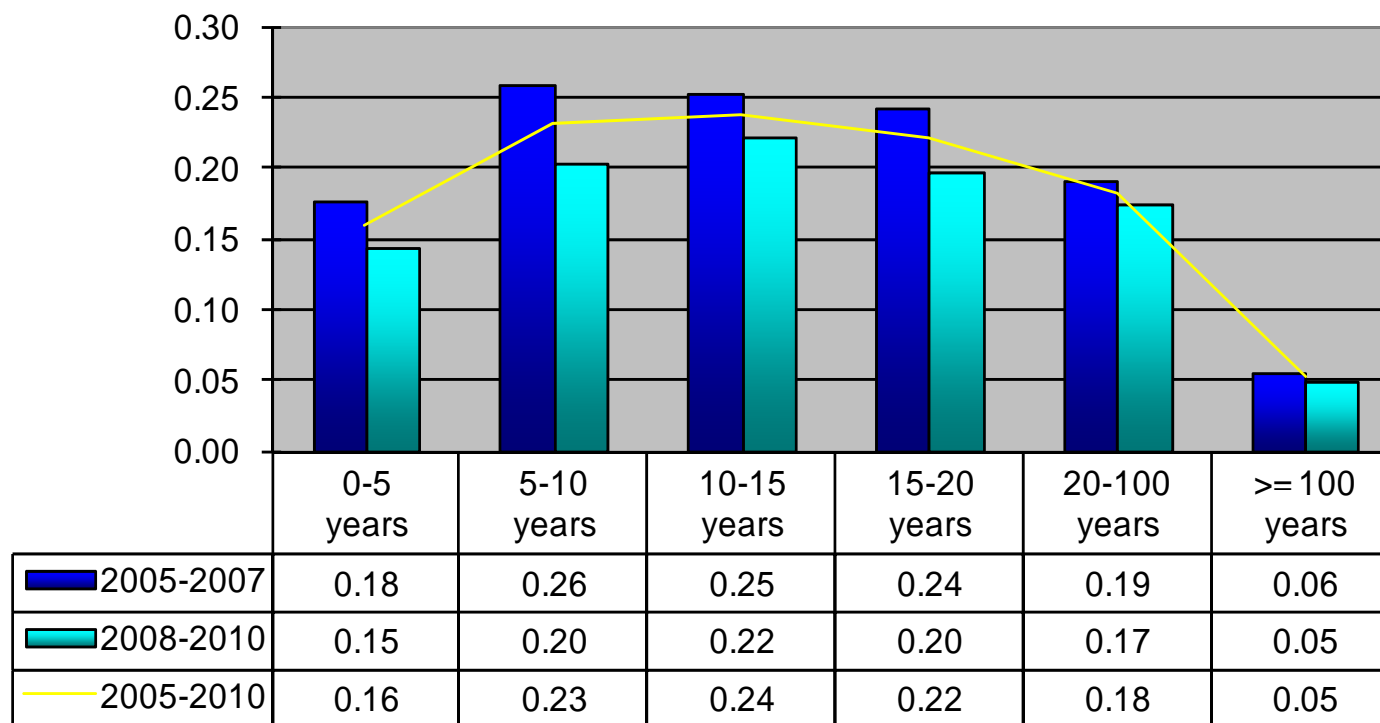


Total number of vessels  
2005-2009: 47,854  
2010: 9,188

# 2010 Nordic Marine Insurance Statistics – Part 4

As of 31 December 2010 – paid+outstanding as reported, no IBNR reserve added

## Claim frequency per age group



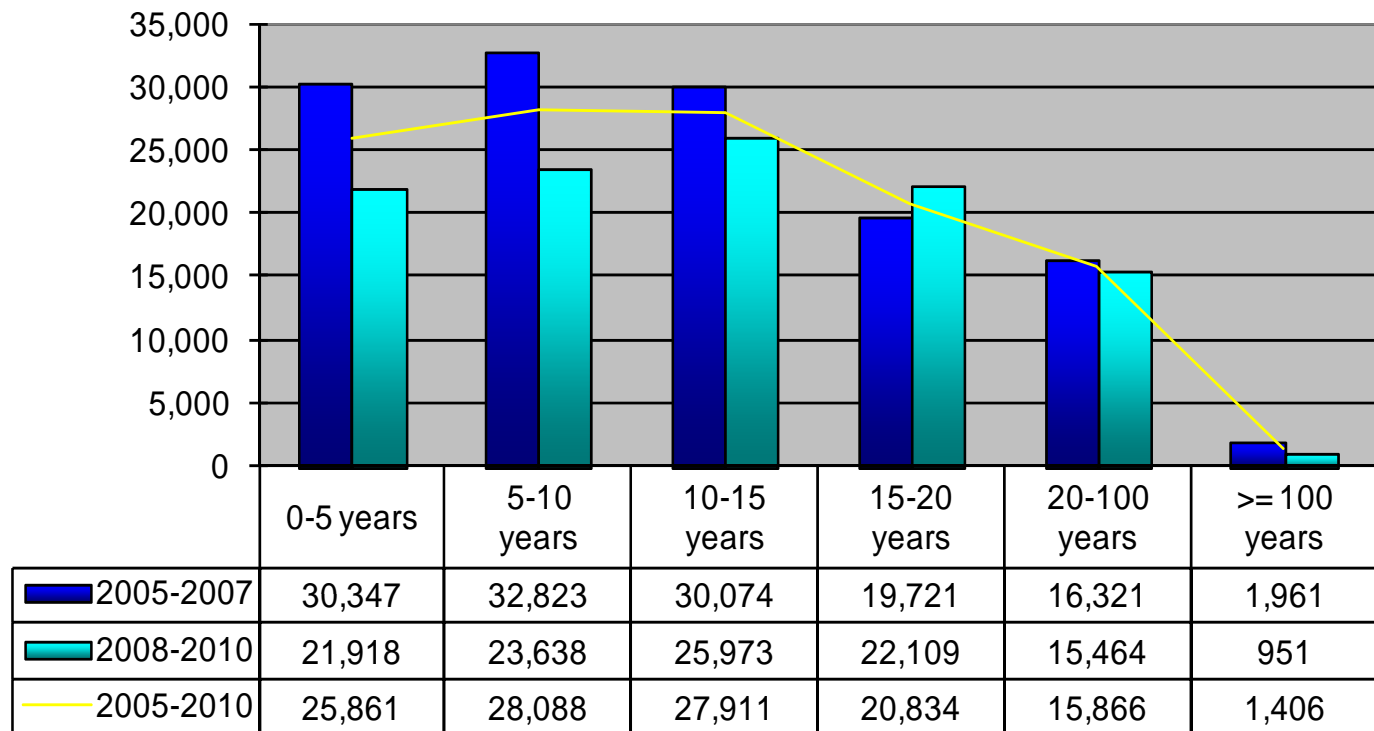
Comment: Claims < 10.000 USD account for about half of all claims. Registration of these may vary over time and in each company and will thus influence the registered frequency. In addition any increase/decrease of insurance deductibles will have impact on the registered frequency



# 2010 Nordic Marine Insurance Statistics – Part 4

As of 31 December 2010 – paid+outstanding as reported, no IBNR reserve added

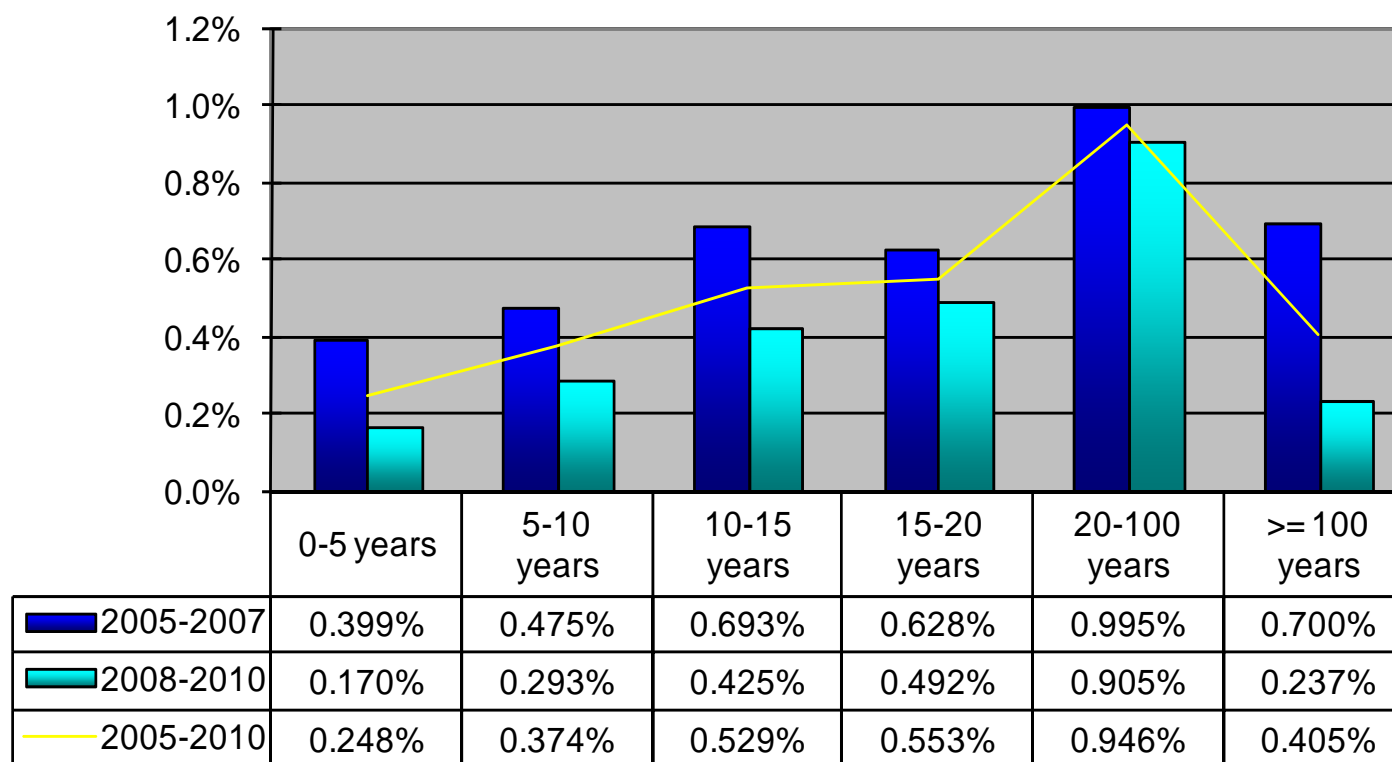
**Claim per vessel per age group**  
in USD



## 2010 Nordic Marine Insurance Statistics – Part 4

As of 31 December 2010 – paid+outstanding as reported, no IBNR reserve added

### Claim per Sum Insured per age group



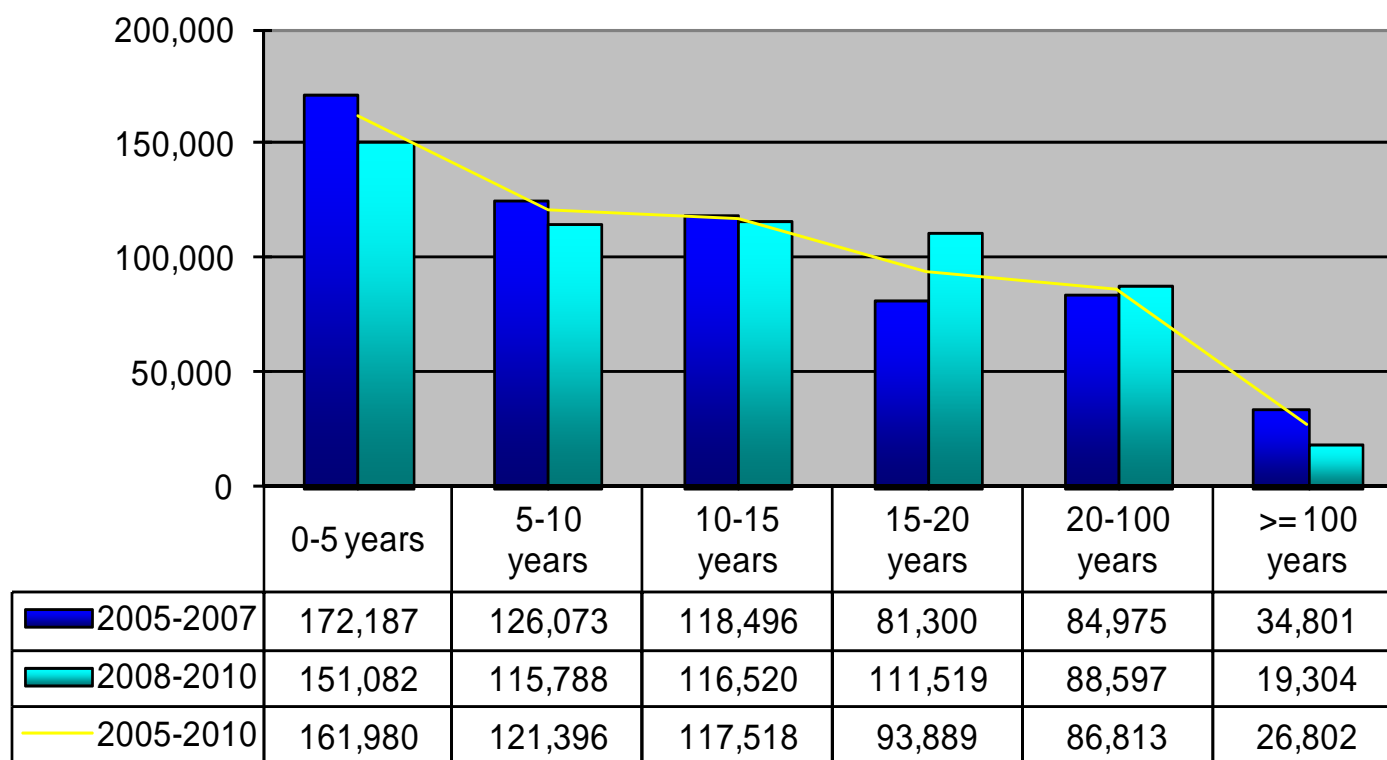


# 2010 Nordic Marine Insurance Statistics – Part 1

As of 31 December 2010 – paid+outstanding as reported, no IBNR reserve added

## Average claim amount per age group

in USD

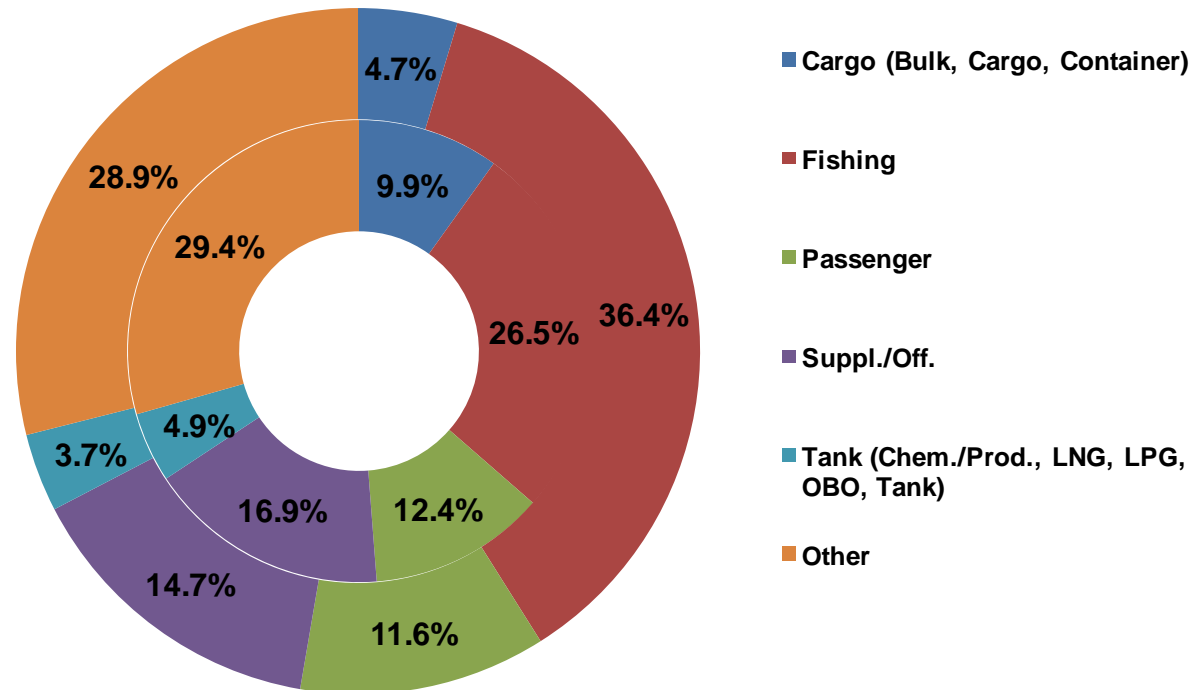


# 2010 Nordic Marine Insurance Statistics – Part 5

As of 31 December 2010

## Number of vessels per vessel type, by year of exposure

Inner ring: 2005-2009  
Outer ring: 2010

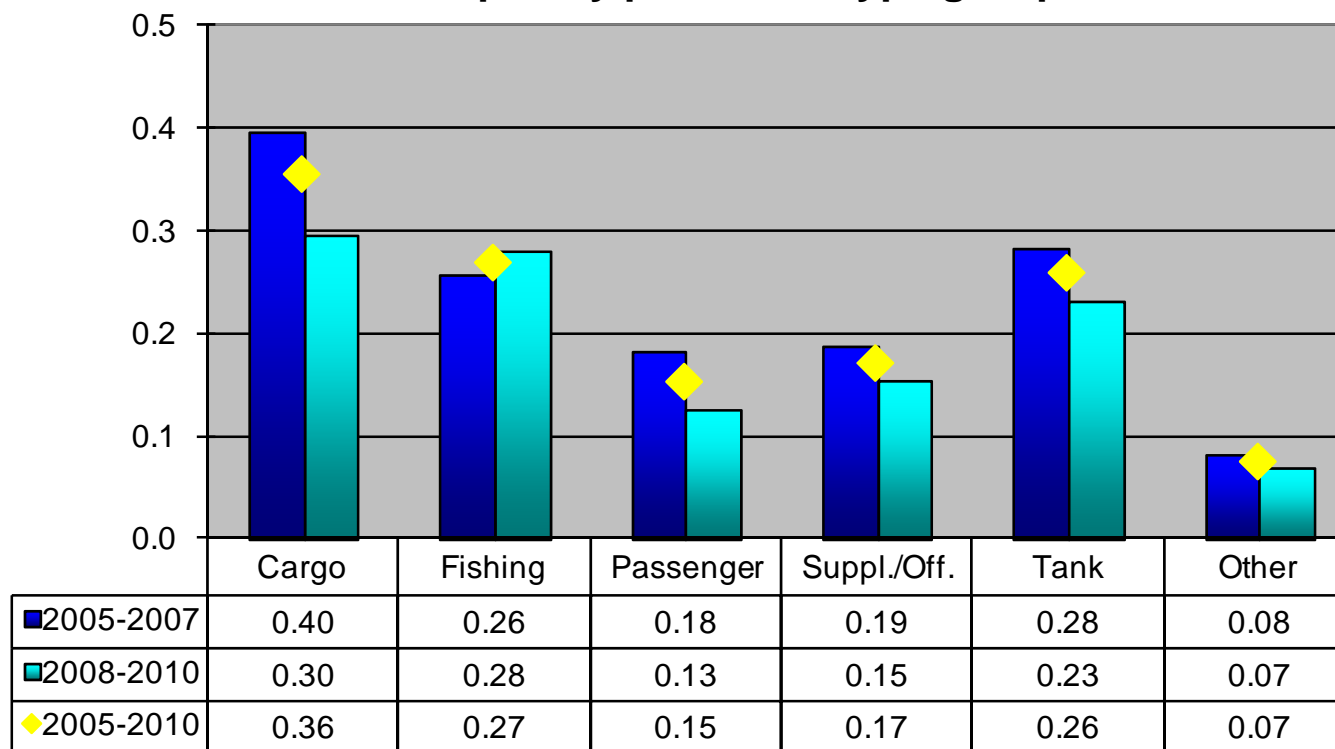


Total number of vessels  
2005-2009: 47,854  
2010: 9,188

# 2010 Nordic Marine Insurance Statistics – Part 5

As of 31 December 2010 – paid+outstanding as reported, no IBNR reserve added

### Claim frequency per vessel type group



Notes: Here and in the following slides

- "Cargo" includes Bulk, Cargo, Container vessels

- "Tank" includes Chemical/Product, LNG/LPG, OBO and other tank vessels

- Claims < 10.000 USD account for about half of all claims. Registration of these may vary over time and in each company and will thus influence the registered frequency.

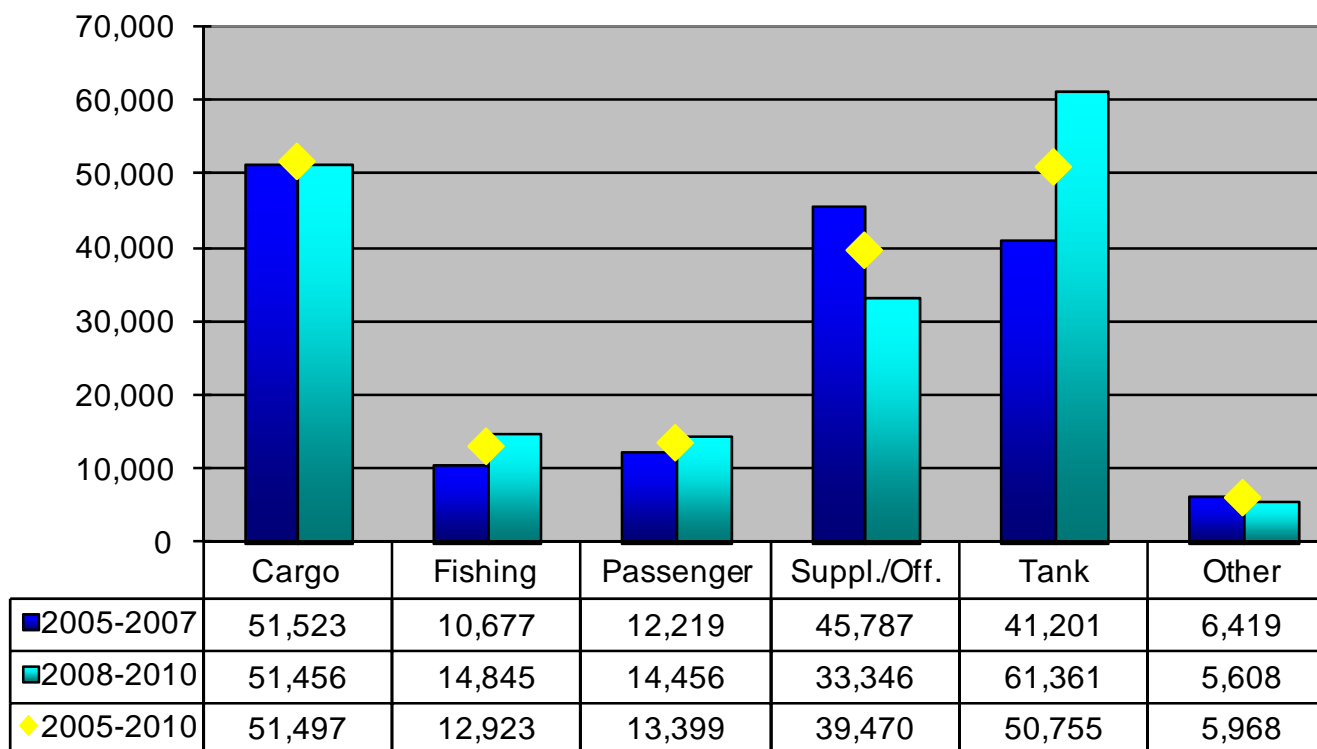
In addition any increase/decrease of insurance deductibles has impact on the registered frequency



## 2010 Nordic Marine Insurance Statistics – Part 5

As of 31 December 2010 – paid+outstanding as reported, no IBNR reserve added

**Claim per vessel per vessel type group**

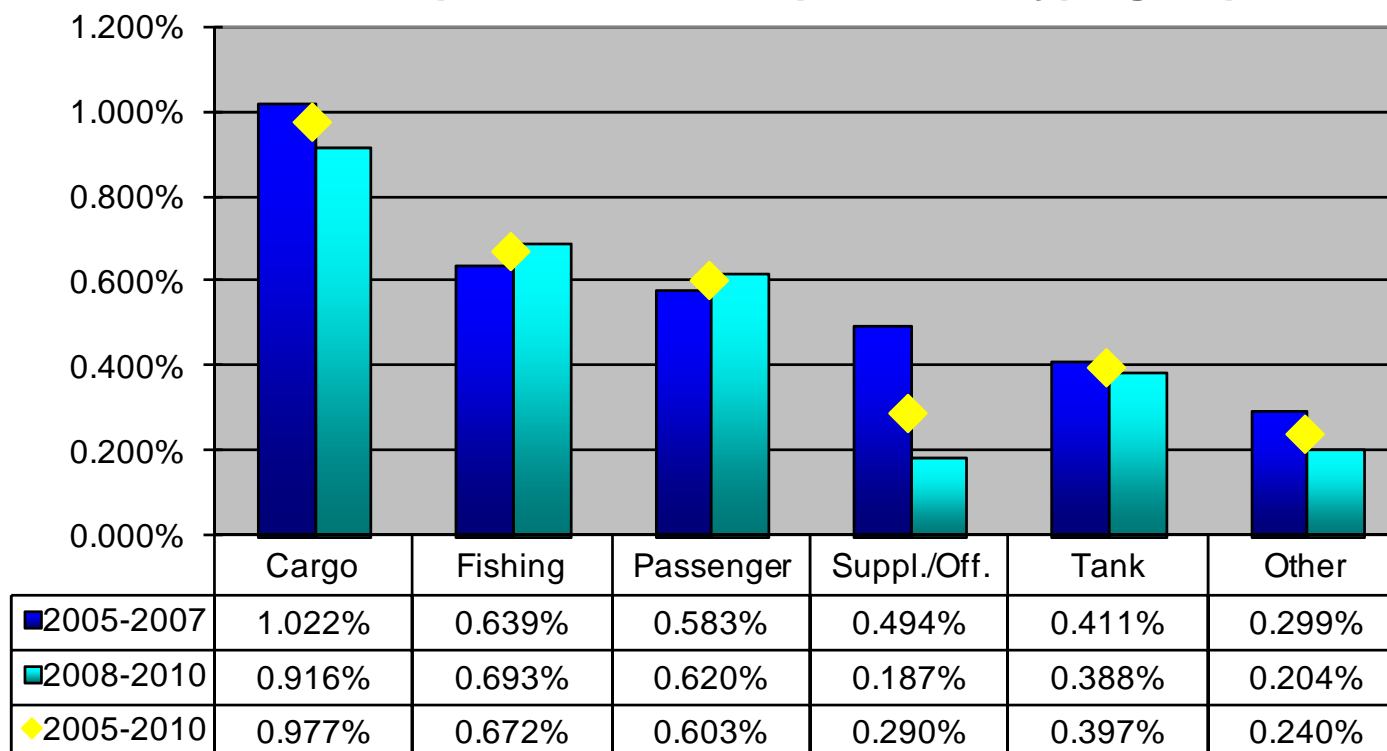




# 2010 Nordic Marine Insurance Statistics – Part 5

As of 31 December 2010 – paid+outstanding as reported, no IBNR reserve added

### Claim per Sum Insured per vessel type group

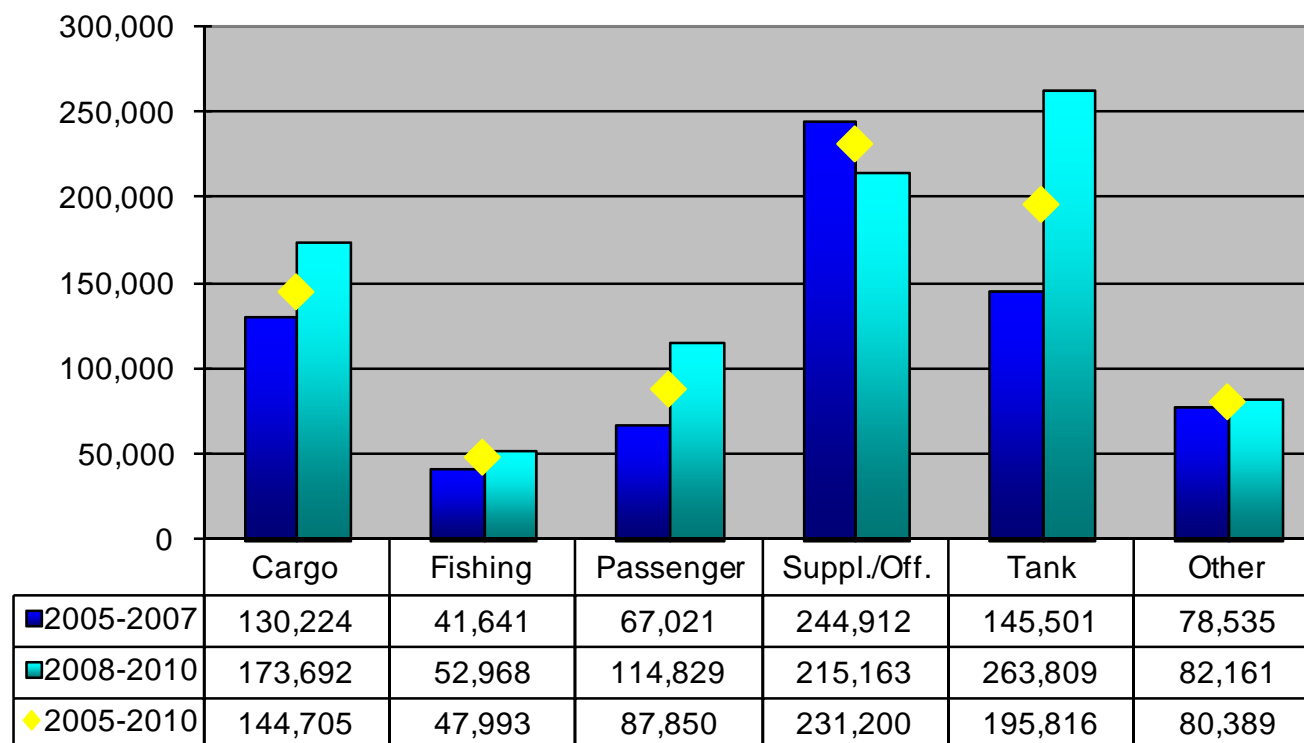




# 2010 Nordic Marine Insurance Statistics – Part 5

As of 31 December 2010 – paid+outstanding as reported, no IBNR reserve added

**Average claim amount per vessel type group**





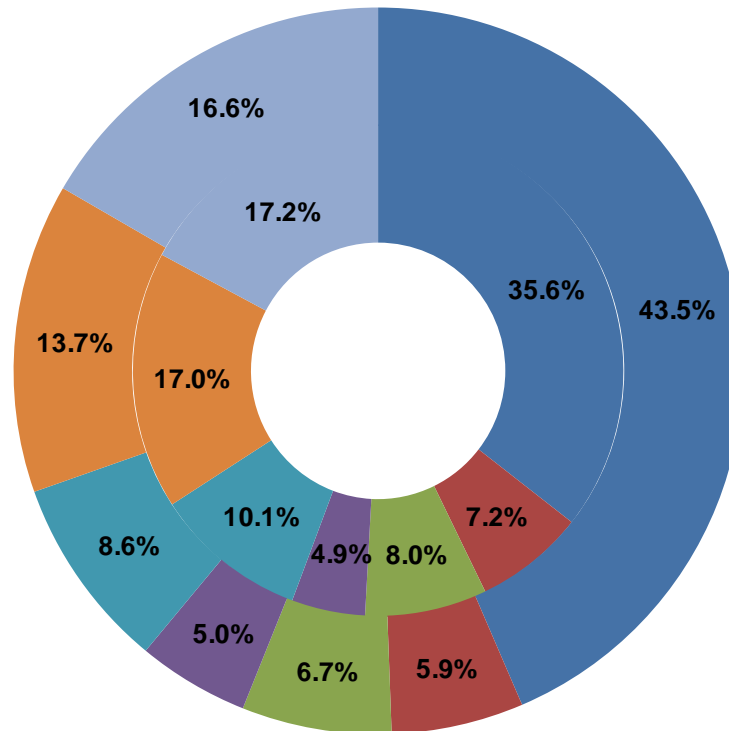
Cefor

# 2010 Nordic Marine Insurance Statistics – Part 6

As of 31 December 2010

## Number of vessels per GT Size Group

Inner ring: 2005-2009  
Outer ring: 2010



Gross ton:

- <=25gt/15m (incl. vessels < 15 meter)
- 25-100
- 100-300
- 300-500
- 500-2,000
- > 2,000
- unknown / 0

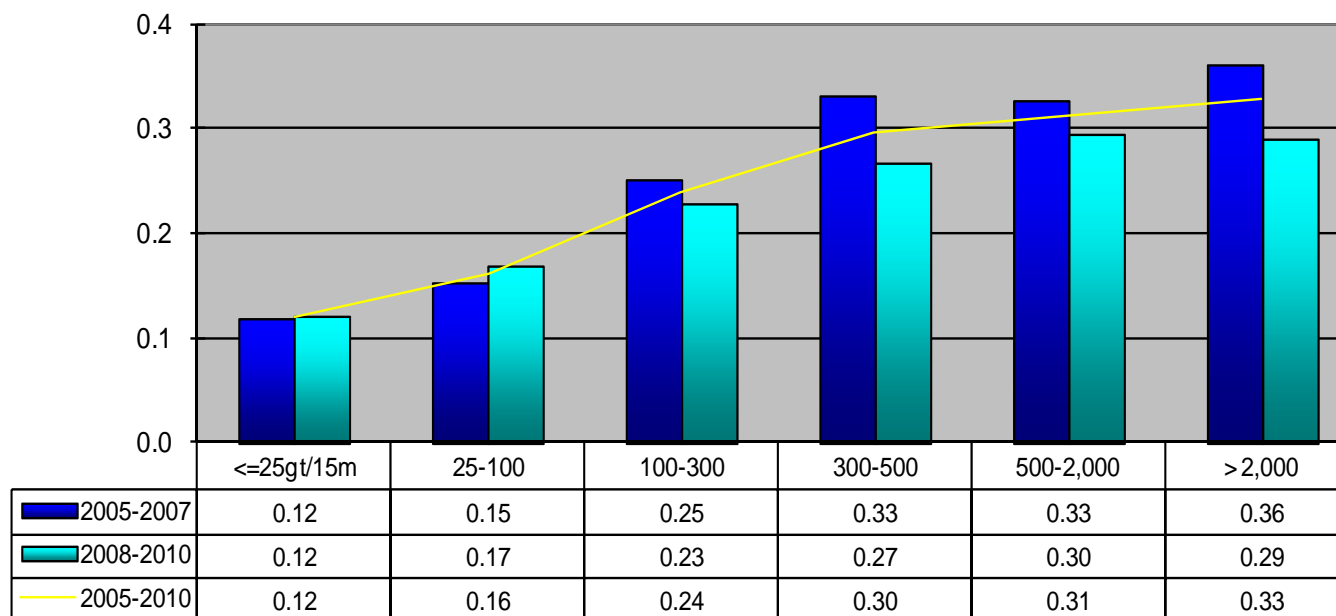
Total number of vessels  
2005-2009: 47,854  
2010: 9,188



# 2010 Nordic Marine Insurance Statistics – Part 6

As of 31 December 2010 – paid+outstanding as reported, no IBNR reserve added

Claim frequency per Gross ton size group



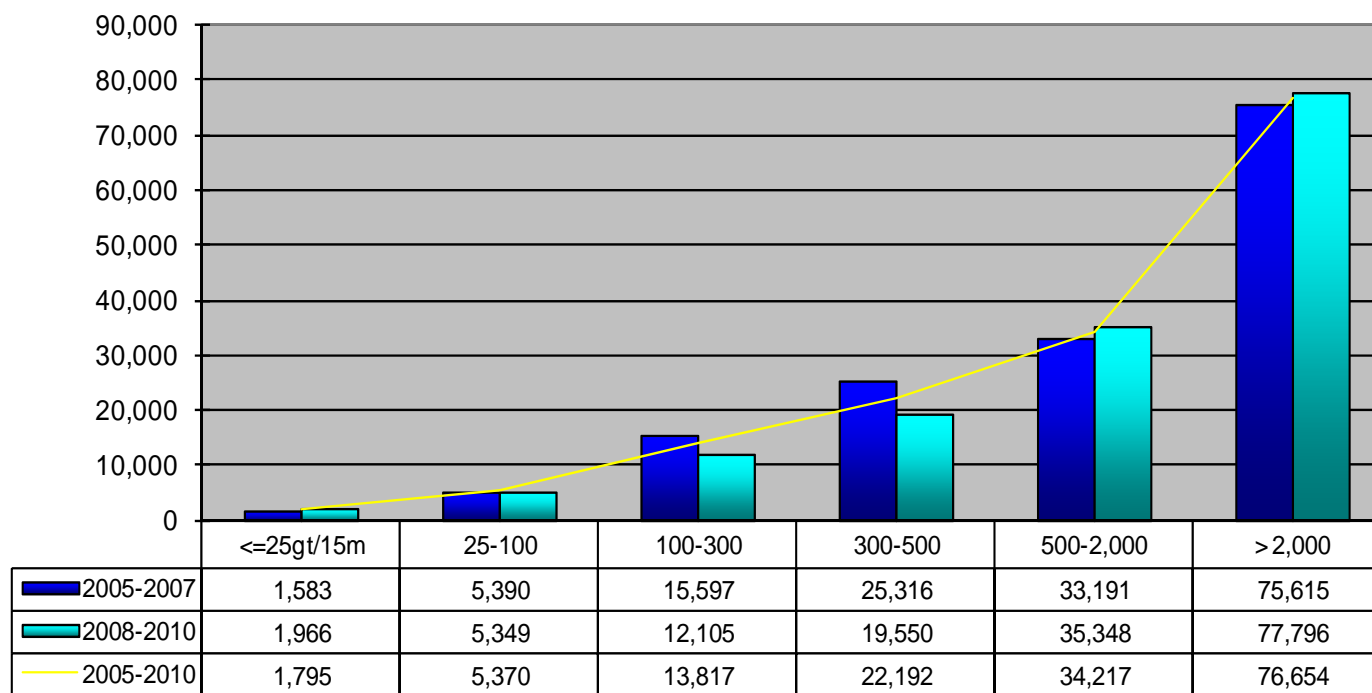
Comment: Claims < 10.000 USD account for about half of all claims. Registration of these may vary over time and in each company and will thus influence the registered frequency. In addition any increase/decrease of insurance deductibles will have impact on the registered frequency



## 2010 Nordic Marine Insurance Statistics – Part 6

As of 31 December 2010 – paid+outstanding as reported, no IBNR reserve added

Claim per vessel per Gross ton size group

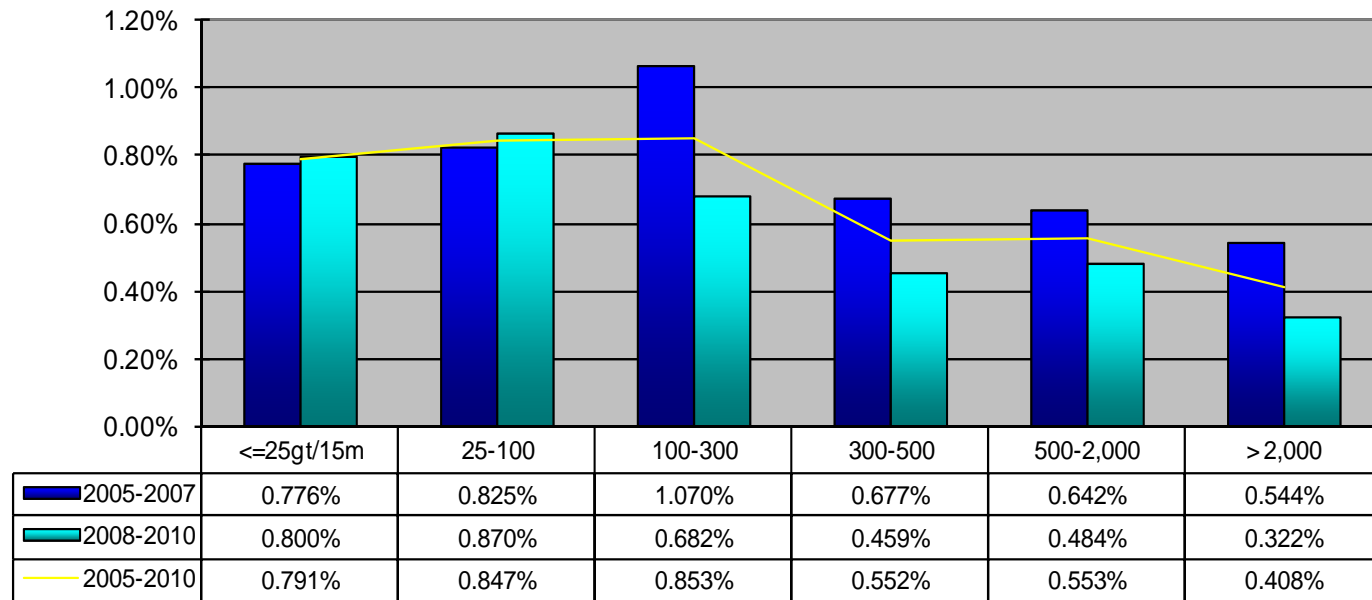




# 2010 Nordic Marine Insurance Statistics – Part 6

As of 31 December 2010 – paid+outstanding as reported, no IBNR reserve added

**Claim per Sum Insured per Gross ton size group**

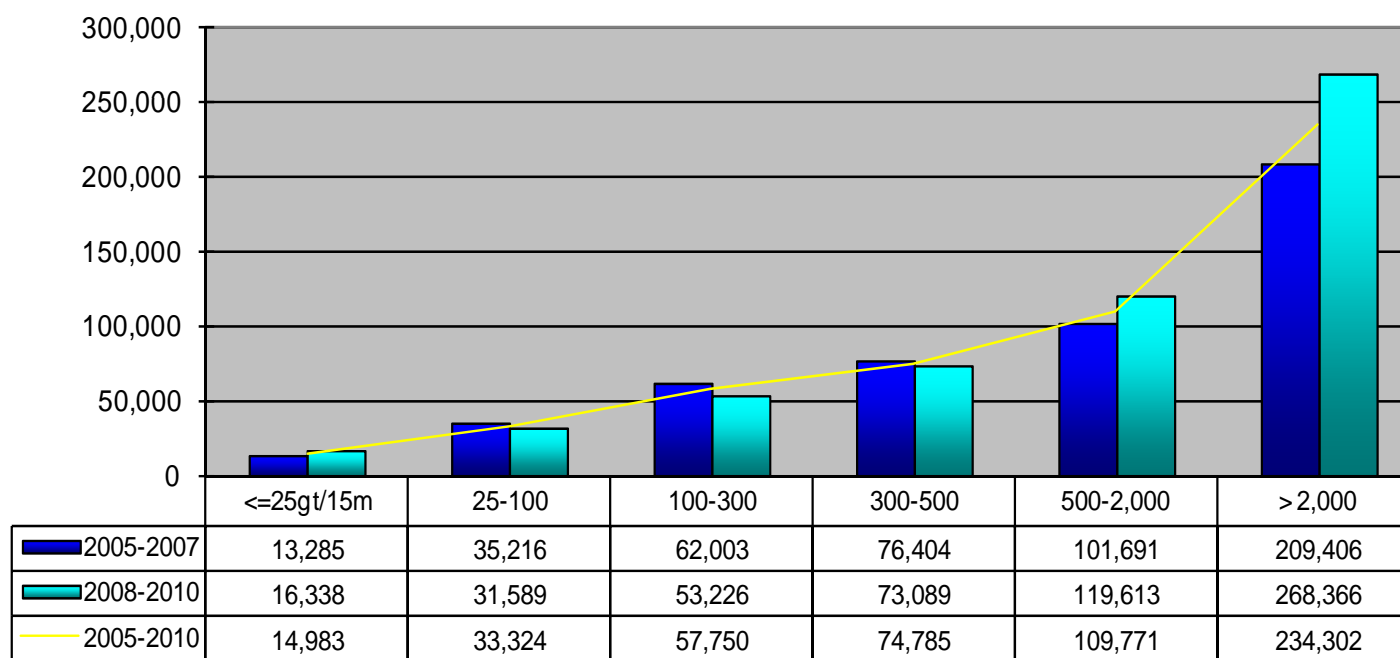




## 2010 Nordic Marine Insurance Statistics – Part 6

As of 31 December 2010 - paid+outstanding as reported, no IBNR reserve added

Average Claim amount per Gross ton size group

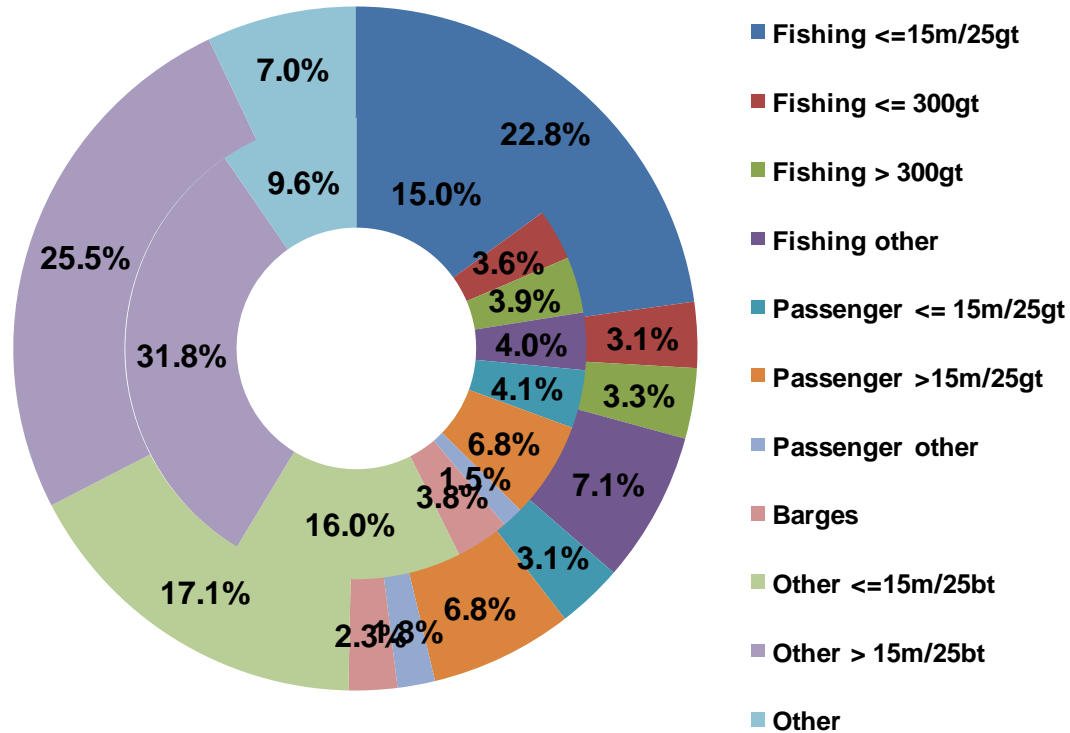


# 2010 Nordic Marine Insurance Statistics – Part 7

As of 31 December 2010

## Number of vessels for selected vessel type & size groups by year of exposure

Inner ring: 2005-2009  
Outer ring: 2010

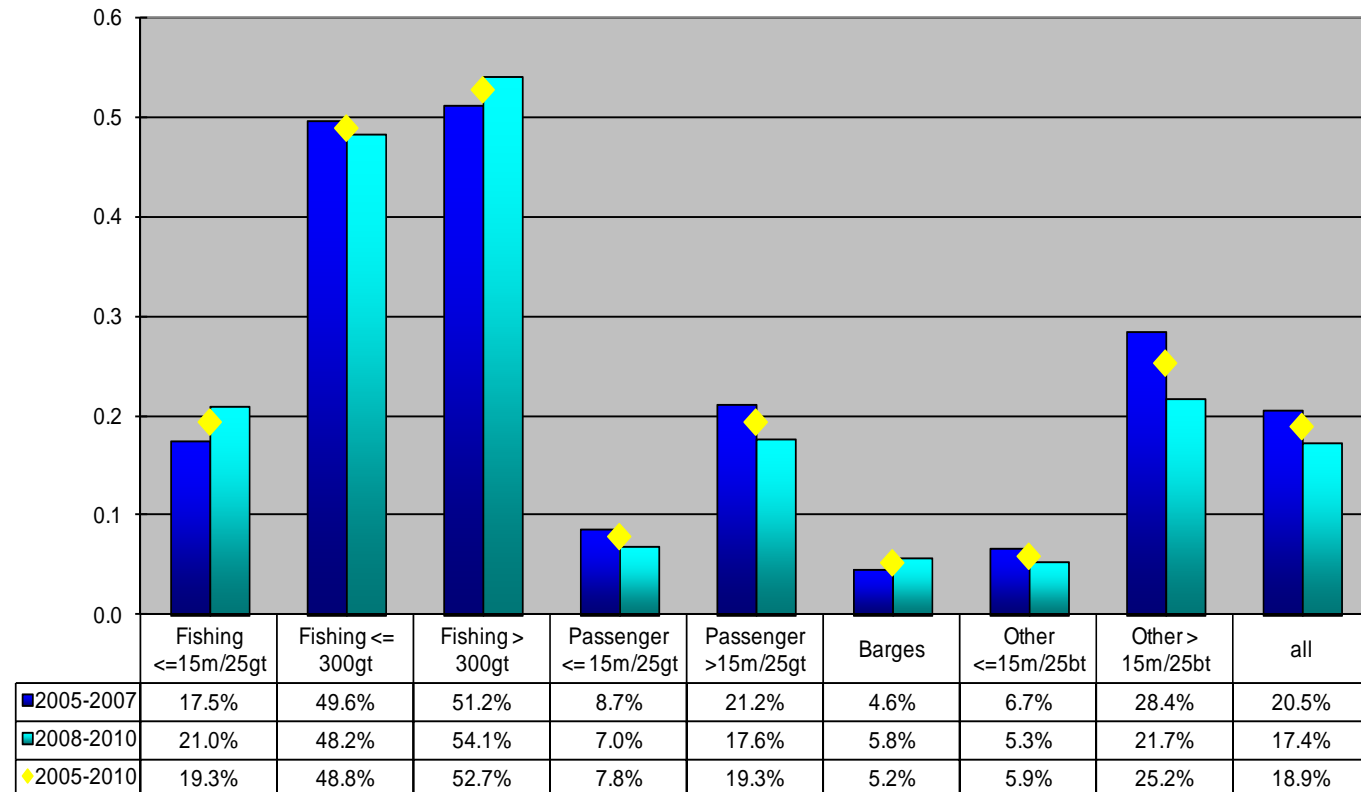


Total number of vessels  
 2005-2009: 47,854  
 2010: 9,188

# 2010 Nordic Marine Insurance Statistics – Part 7

As of 31 December 2010 – paid+outstanding as reported, no IBNR reserve added

**Claim frequency for selected coastal vessel type & size groups**



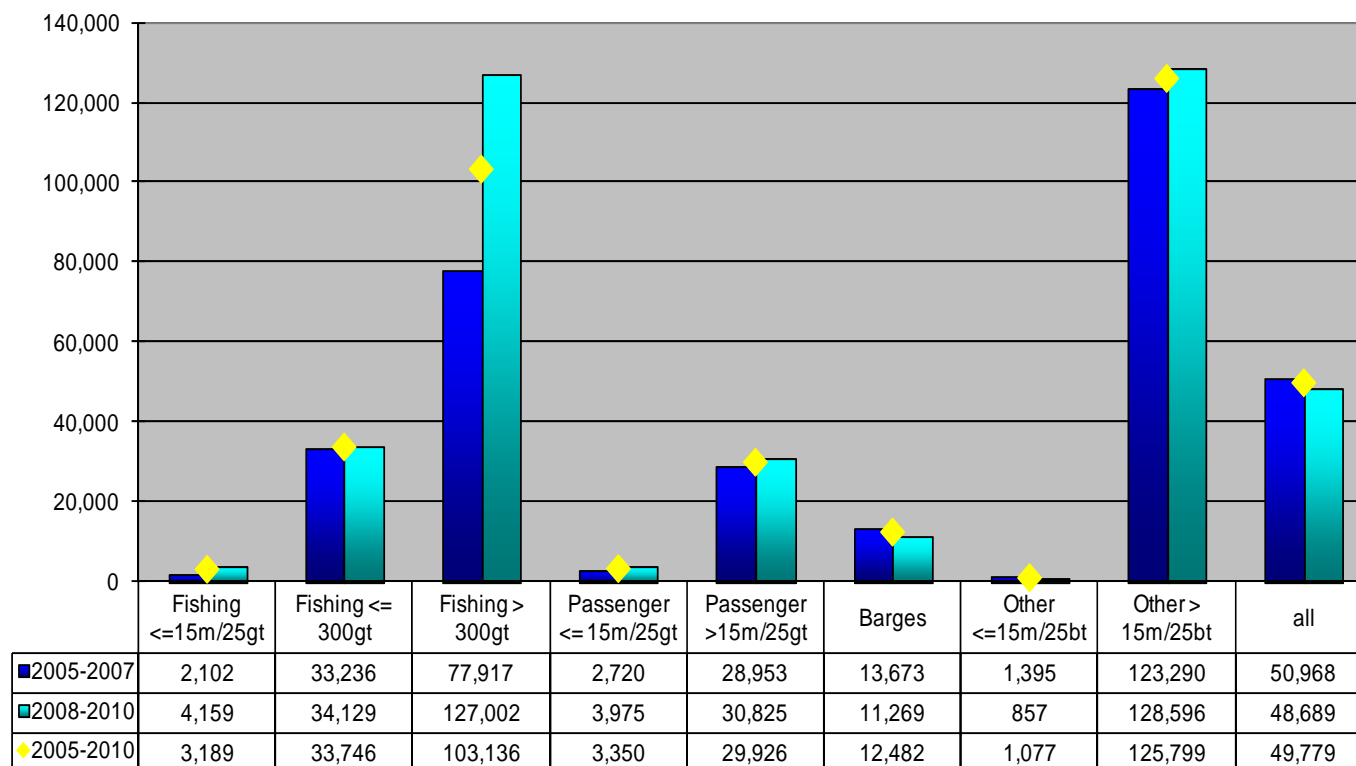
Claims < 10.000 USD account for about half of all claims. Registration of these may vary over time and in each company and will thus influence the registered frequency.  
 In addition any increase/decrease of insurance deductibles has impact on the registered frequency



# 2010 Nordic Marine Insurance Statistics – Part 7

As of 31 December 2010 – paid+outstanding as reported, no IBNR reserve added

### Claim per vessel for selected coastal vessel type & size groups

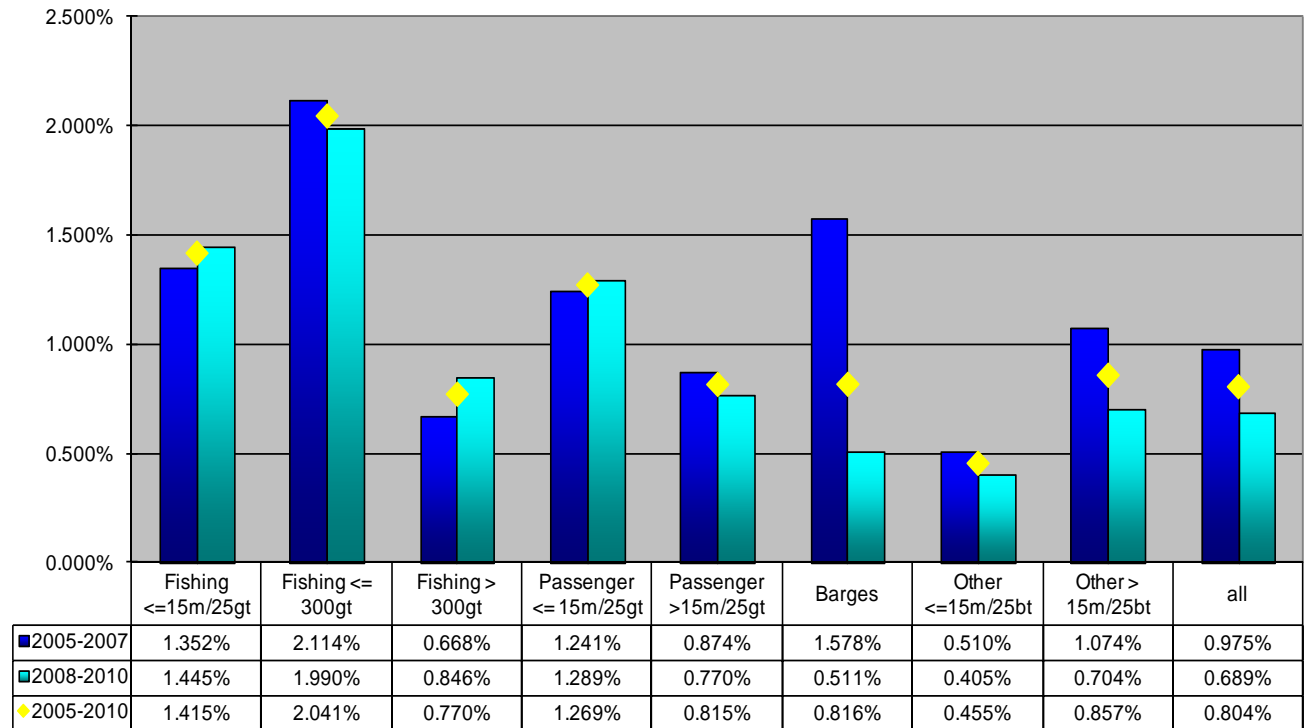




# 2010 Nordic Marine Insurance Statistics – Part 7

As of 31 December 2010 – paid+outstanding as reported, no IBNR reserve added

**Claim per Sum Insured for selected coastal vessel type and size groups**

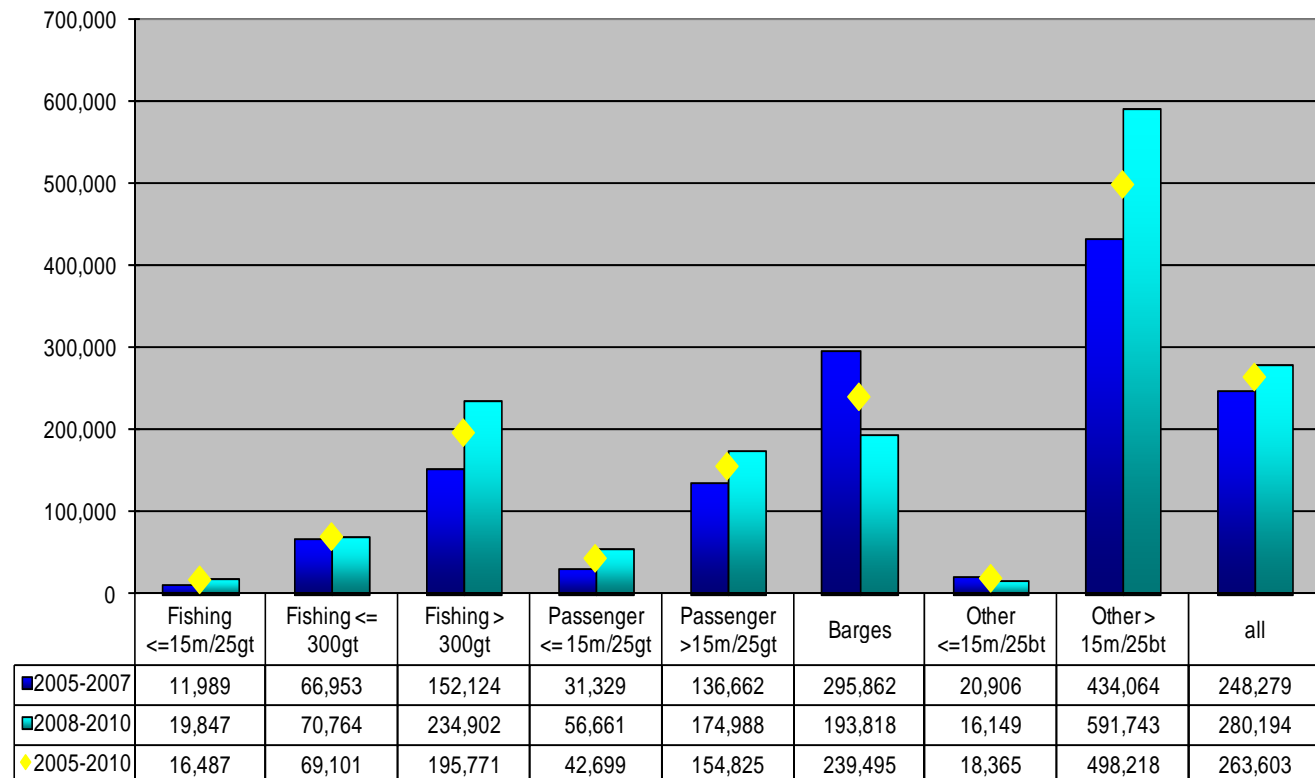




# 2010 Nordic Marine Insurance Statistics – Part 7

As of 31 December 2010 – paid+outstanding as reported, no IBNR reserve added

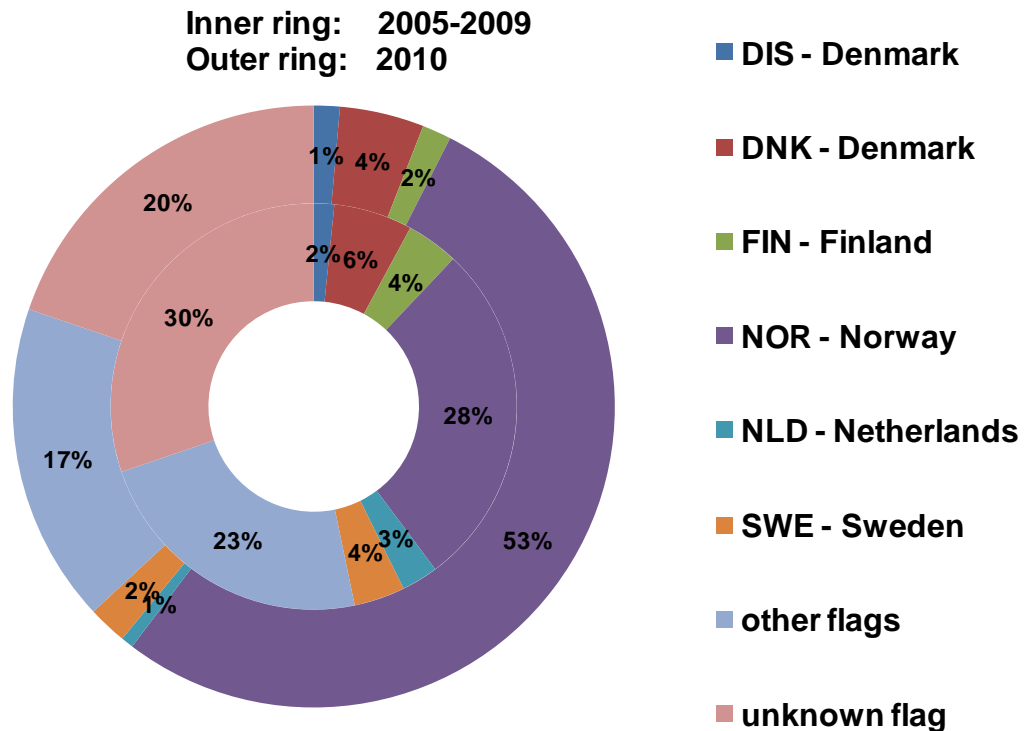
Average claim amount for selected coastal vessel type & size groups



# 2010 Nordic Marine Insurance Statistics

As of 31 December 2010

Number of vessels by flag by underwriting year





## 2010 Nordic Marine Insurance Statistics

Cefor marine insurance statistics publications at <http://www.cefor.no> :

- Cefor Annual Report 2010
- The 2010 Cefor NoMIS Ocean Hull Report
- The 2010 Cefor NoMIS Coastal Hull Report
  
- All Cefor statistics, including previously published reports, are available for download from the statistics section of the Cefor website:  
<http://www.cefor.no/statistics/statistics.htm>

Other marine insurance statistics:

- IUMI (International Union of Marine Insurance):  
Statistics issued by IUMI's Facts & Figures Committee:  
<http://www.iumi.com/index.cfm?id=7165>